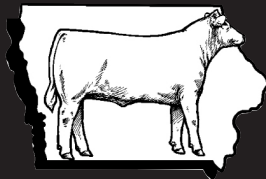




IOWA
CATTLE
INDUSTRY
HEADQUARTERS



Iowa Cattlemen's Association

2023 Policy

Iowa Cattlemen's Association Mission

ICA's mission is to "Grow Iowa's beef business through advocacy, leadership and education."

Strategic Priorities & Goals

The strategic priorities and the goals of each are:

Represent ICA Members

Goal: Be the definitive voice of the Iowa beef industry.

Have a Legislative and Regulatory Presence

Goal: Influence the outcome of government actions to the most positive outcome for cattle producers.

Support Leadership Development of Members

Goal: Strengthen the leadership capacity of ICA members with a special emphasis on developing young leaders.

Provide Staff Support to County Affiliates

Goal: Develop tools and training for county affiliates to effectively implement local activities.

Review Governance Structure

Goal: Assure association governance is representative of members while maintaining effective and efficient operations.

CONTACT US:

Iowa Cattlemen's Association • 2055 Ironwood Court • Ames, IA 50014

Phone: 515-296-2266 • Fax: 515-296-2261

www.iacattlemen.org

ICA POLICY SETTING PROCESS

Policy input is gathered year-round from members through listening sessions, an annual survey, and informal member feedback. A Cow-Calf Council and Feedlot Council also provide input.

Twice a year, the Iowa Cattlemen’s Association (ICA) Policy Committees meet to develop policy based on that input. All ICA members are invited to participate in policy discussion and vote at the Policy Committee Meetings.

Policies adopted in the summer committee meetings are taken to the ICA board, who has the authority to adopt interim policy when needed.

Policies adopted in the committee meetings are taken to the ICA Annual Meeting, which takes place in the winter. At the Annual Meeting, all members present are able to vote on the policies.

The ICA Board of Directors, Executive Committee, and Staff are all guided by the policies adopted at the Annual Meeting. ICA policies provide the framework for these groups to enforce, improve, or change legislation and programming to support Iowa’s cattle producers throughout the year.

ICA presently has three standing policy committees, they are:

- Beef Products Committee
- Business Issues Committee
- Cattle Production Committee

Below is the contact information for Policy Committee Chairs.

Beef Products Committee

Business Issues Committee

Jason Kurt, *Chair*. 563-599-1405

Cattle Production Committee

Mike Schwarck, *Chair* 641-373-0672

Matt Winters, *Vice Chair* 563-929-0046

For questions related to the policy committees, contact the ICA Director of Government Relations at (515) 296-2266.

All Policies (Resolutions) shall remain in effect for five years. (Policies requiring review either need to be deleted or reinstated as a new Resolution.)

- Policies not expiring can be pulled for review during the ICA Annual Meeting.

All Directives shall remain in effect for only one year. (Directives requiring review either need to be deleted or reinstated as a new Directive.)

- Directives contain the letter “D” in their title. (Example: XX-XXX-D-X)

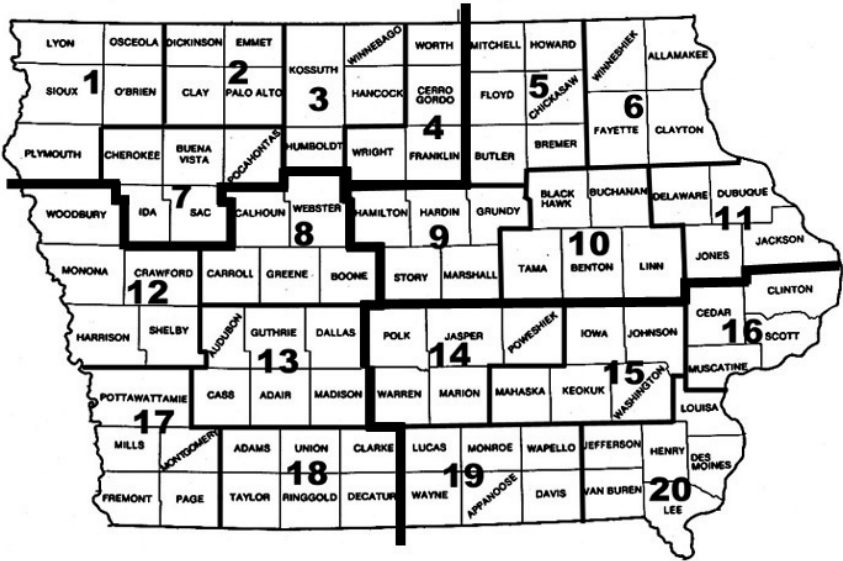
IOWA CATTLEMEN'S ASSOCIATION CONTACTS

Producers have a voice in setting priorities and developing policy to support Iowa's cattle industry. ICA policies are developed at the ICA Annual Meeting and the policies are taken before the Iowa Legislature or the National Cattlemen's Beef Association Annual Convention. These policies result in new programs, laws, or regulations that improve the state and national business climate for

the beef industry. ICA monitors many issues and programs, and has been instrumental in developing new programs.

The ICA Board of Directors is made up of an Executive Committee, 20 District Directors and 11 Directors at Large. Feel free to contact them at anytime.

IOWA CATTLEMEN'S ASSOCIATION REGIONAL MAP



ICA EXECUTIVE COMMITTEE

President

Robert Noble, *Riceville*.....641-985-2497

President-elect

Rob Medberry, *Volga*563-380-4835

Regional Vice Presidents

Craig Moss, *Hull*712-439-6704

Scott Niess, *Osage*.....641-590-2577

Justin Rowe, *Dallas Center*515-360-9010

Doug Schroeder, *Clarence*563-886-2022

Associate Vice President

David Rueber, *Luxemburg*.....563-590-4775

DISTRICT DIRECTORS

District 1

Lyon, O'Brien, Osceola, Sioux, Plymouth

John Tiedeman, *Hull*.....712-470-0343

District 2

Clay, Dickinson, Emmet, Palo Alto

Frank Reding, *Cylinder*712-298-2637

District 3

Hancock, Humboldt, Kossuth, Winnebago

J.D. Morris, *Algona*.....515-341-1944

District 4

Cerro Gordo, Franklin, Worth, Wright

Mark DeVries, *Sheffield*641-425-2150

IOWA CATTLEMEN'S ASSOCIATION CONTACTS

District 5

Bremer, Butler, Chickasaw, Mitchell, Floyd, Howard
Brad Baisley, Floyd641-220-1377

District 6

Allamakee, Clayton, Fayette, Winneshiek
J. Mark Putney, Elgin515-326-5694

District 7

Buena Vista, Cherokee, Ida, Pocahontas, Sac
Brian Tuttle, Granville712-540-2463

District 8

Boone, Calhoun, Carroll, Greene, Webster
Justin Venner, Carroll402-321-1065

District 9

Grundy, Hamilton, Hardin, Marshall, Story
Paden Lawler, Union641-640-0954

District 10

Benton, Black Hawk, Buchanan, Linn, Tama
Scott Birker, Garrison319-560-9252

District 11

Delaware, Dubuque, Jackson, Jones
Grant Beeler, Cascade515-669-8114

District 12

Crawford, Harrison, Monona, Shelby, Woodbury
Tim Graeve, Manilla712-579-4817

District 13

Adair, Audubon, Cass, Dallas, Guthrie, Madison
Darrin Crawley, Guthrie Center641-757-0957

District 14

Jasper, Marion, Polk, Poweshiek, Warren
Greg Bartelma, Runnells515-710-9920

District 15

Iowa, Johnson, Keokuk, Mahaska, Washington
Dennis Clarahan, Harper319-330-6377

District 16

Cedar, Clinton, Muscatine, Scott
Terry Chapman, Tipton319-329-5904

District 17

Fremont, Mills, Montgomery, Page, Pottawattamie
Will Longinaker, Randolph712-242-8555

District 18

Adams, Clarke, Decatur, Ringgold, Taylor, Union
Jeff Landrum, Lineville641-414-3979

District 19

Appanoose, Davis, Lucas, Monroe, Wapello, Wayne
Bryan Reed, Albia641-777-4010

District 20

Des Moines, Henry, Jefferson, Lee, Louisa, Van Buren
Dan Delaney, Fairfield563-599-1207

DIRECTORS AT LARGE

Bruce Long, IBBC Rep515-351-0013
Scott McGregor, IBIC Rep641-330-2854
Richard Godfrey, Past President712-825-3542
Dan Loy, IBC Rep515-451-8805
Justin Robbins, C/C Rep515-370-1418
Jason Kurt, Committee Chair563-599-1405
Mike Schwarck, Committee Chair641-373-0672
Dustin Puhmann, Feedlot Rep712-229-2258
Mark DeVries, Membership Chair641-425-2150

CONTACT US

ICA STAFF

Matt Deppe, Chief Executive Officer matt@iacattlemen.org
Jackie Ditsworth, Graphic Designer jackie@iacattlemen.org
Cora Fox, Director of Government Relations cora@iacattlemen.org
Tanner Lawton, Director of Member Services & NW Iowa Membership Manager tanner@iacattlemen.org
Meghan Orr, NE Iowa Member Services meghan@iacattlemen.org
Skylar Brittain, SW Iowa Member Services skylar@iacattlemen.org
Madysen Thill, SE Iowa Member Services madysen@iacattlemen.org
Barb Finch, Bookkeeper/Administrative Assistant barb@iacattlemen.org
Bailey Pearson, Receptionist & Membership Assistant membership@iacattlemen.org

2055 Ironwood Court | Ames, IA 50014 | 515-296-2266 | www.iacattlemen.org

BEEF PRODUCTS COMMITTEE

TABLE OF CONTENTS

BEEF SAFETY

BP-BS-1	Research.....	6
BP-BS-2	Beef Quality Assurance (BQA).....	6
BP-BS-6	Foodborne Pathogens.....	6
BP-BS-13	Safe Food Handling Labels.....	7
BP-BS-15	Non-Ambulatory Cattle.....	7
BP-BS-16	Irradiation	7
BP-BS-18	Beef Products Production Transparency.....	7
BP-BS-19	Beef Import Safety & Inspection.....	8

GLOBAL CONSUMER MARKETING

BP-GCM-1	World Trade.....	8
BP-GCM-7	U.S. Meat Export Federation.....	8
BP-GCM-10	Small Processor, Differentiated Consumer & Local Foods Systems Markets.....	8
BP-GCM-11	International Markets.....	9
BP-GCM-27	Export Assistance Funding.....	9
BP-GCM-35	Support for Iowa Beef Checkoff Fund.....	9
BP-GCM-36	Usage of Iowa Beef Checkoff Funding.....	10
BP-GCM-37	USDA Quality Grades & Consumer Clarity in Retail Marketing	10
BP-GCM-38	Harmony in Beef Promotion.....	10
BP-GCM-39	Transparency in Labeling	10
BP-GCM-40	WTO-Compliant MCOOL for Beef.....	11

NUTRITION, HEALTH & INFORMATION

BP-NHI-4	Beef Team.....	11
BP-NHI-10	National Beef Checkoff Program.....	11
BP-NHI-11	Food Safety.....	12
BP-NHI-12	Public Education	12
BP-NHI-13	Lean Beef in Nutritional Programs	12
BP-NHI-14	Media Coverage.....	12
BP-NHI-15	Health/Obesity.....	13
BP-NHI-16	Alternative Meats	13

BEEF PRODUCTS COMMITTEE

BEEF SAFETY

BP-BS-1 Research

2019

WHEREAS, the Iowa Cattlemen's Association supports and actively promotes Beef Quality Assurance; and

WHEREAS, the Iowa Cattlemen's Association recognizes that Beef Quality Assurance has a significant influence on beef demand; and

WHEREAS, foodborne pathogens that cause human illness are known to exist in cattle populations.

THEREFORE, BE IT RESOLVED, the Iowa Cattlemen's Association supports research to identify:

1. Critical control points in cattle production systems that have the potential to reduce foodborne pathogens; and
2. Preventative management interventions that may reduce the prevalence of foodborne pathogens in cattle. These controls and/or interventions should make statistical, meaningful reductions of foodborne pathogens in a cost-effective manner.

BP-BS-2 Beef Quality Assurance (BQA)

2021

WHEREAS, cattlemen are dedicated to the production of safe, wholesome and healthful beef; and

WHEREAS, injectable animal health products, vaccines, biologics, antibiotics, anthelmintics and other pharmaceuticals are essential to maintaining animal health and performance.

THEREFORE, BE IT RESOLVED, management and health procedures, encompassing all facets of production, will address and increase awareness of animal comfort zones including least invasive techniques and cervical injection sites which are subcutaneous whenever possible.

BE IT FURTHER RESOLVED, the Iowa Cattlemen's Association continues to support the current beef checkoff-funded Beef Quality Assurance Program.

BE IT FURTHER RESOLVED, the Iowa Cattlemen's Association encourages cattle producers, all other segments of the beef industry, and consumers to recognize BQA programs, guidelines and associated audits as the industry standard for beef quality, beef safety, and cattle care and handling.

BP-BS-6 Foodborne Pathogens

2020

WHEREAS, the beef industry is dedicated to providing safe and wholesome beef products; and

WHEREAS, the beef industry has supported and encouraged a more science based meat inspection system; and

WHEREAS, the beef industry supports the goal of reducing foodborne pathogenic bacteria in beef products using proven scientific methods; and

WHEREAS, efforts are underway to develop an extensive on-farm pathogen reduction (pre-harvest) program.

BEEF PRODUCTS COMMITTEE

THEREFORE, BE IT RESOLVED, the Iowa Cattlemen's Association supports meaningful research directed toward the identification and reduction of foodborne pathogens in beef animals.

BP-BS-13 Safe Food Handling Labels **2020**

WHEREAS, the public needs to be aware that some food products and not just meat products may contain bacteria that could cause illness if those food products are mishandled or improperly cooked.

THEREFORE, BE IT RESOLVED, the Iowa Cattlemen's Association supports food labeling and educational programs which inform consumers of the proper method of handling foods to avoid foodborne illness.

BP-BS-15 Non-Ambulatory Cattle **2021**

WHEREAS, the United States Department of Agriculture (USDA) blanket policy of not allowing non-ambulatory cattle into the food supply may not be based on the most current scientific knowledge; and

WHEREAS, cattle with recent injuries may provide a safe beef product for personal use, without an option for retail sale.

THEREFORE, BE IT RESOLVED, the Iowa Cattlemen's Association requests the USDA revisit the issue of classifying all non-ambulatory disabled cattle as adulterated under the federal act.

BE IT FURTHER RESOLVED, the USDA should establish scientific criteria for a veterinarian to distinguish between recently injured cattle and diseased cattle.

BP-BS-16 Irradiation **2019**

WHEREAS, cattlemen are dedicated to the production of safe, wholesome and healthful beef; and

WHEREAS, irradiation has now been approved as a method to reduce pathogens in beef products.

THEREFORE, BE IT RESOLVED, the Iowa Cattlemen's Association encourage the use of irradiation throughout the beef industry.

BP-BS-18 Beef Products Production Transparency **2023**

WHEREAS, Consumers often have a lack of exposure and understanding on how beef products are produced; and

WHEREAS, this void of knowledge can lead to doubts or even worse, a sense that beef producers and processors are hiding something.

THEREFORE, BE IT RESOLVED, the Iowa Cattlemen's Association supports transparency in beef production and processing intended to provide objective, honest, and factual information about modern beef production practices to influencers and consumers in general.

BEEF PRODUCTS COMMITTEE

BP-BS-19 Beef Import Safety & Inspection **2022**

WHEREAS, the federal meat inspection program was mandated by Congress for the safety of the public; and

WHEREAS, there is a need to have consistent inspection of all Beef products produced domestically and imported; and

WHEREAS, the U.S. consumer deserves to know where beef is produced; and

WHEREAS, the U.S. is now importing beef from countries with known cases of Foot and Mouth disease; and

WHEREAS, it has been alleged that a minimal percentage of imported beef is inspected by USDA.

THEREFORE, BE IT RESOLVED, the Iowa Cattlemen's Association encourages the National Cattlemen's Beef Association to work with USDA to enforce the same inspection rules on imported beef that are currently being used on U.S. produced beef.

BE IT FURTHER RESOLVED, that all imported beef inspected by the USDA should have a certification that identifies the product as imported beef.

BE IT FURTHER RESOLVED, the USDA should ensure that imported beef is certified free of foreign disease at port of origin.

GLOBAL CONSUMER MARKETING

BP-GCM-1 World Trade **2020**

WHEREAS, increased world trade of beef and beef by-products is probable.

THEREFORE, BE IT RESOLVED, the Iowa Cattlemen's Association supports and encourages the activities and efforts of the United States Meat Export Federation to research markets.

BE IT FURTHER RESOLVED, the Iowa Cattlemen's Association encourages the National Cattlemen's Beef Association, Cattlemen's Beef Board, and the Iowa Corn Promotion Board to support these efforts.

BP-GCM-7 U.S. Meat Export Federation **2022**

WHEREAS, the United States Meat Export Federation (USMEF) program has been successful in increasing U.S. beef exports.

THEREFORE, BE IT RESOLVED, the Iowa Cattlemen's Association and the Iowa Beef Industry Council continue to support the efforts of the USMEF.

BP-GCM-10 Small Processor, Differentiated Consumer **2019 & Local Foods Systems Markets**

WHEREAS, the cattle industry supports the need and strengths of the local processing industry to serve producers and consumers locally processed and raised beef that is available, safe and healthy, and promotes the good economic growth our communities desire; and

WHEREAS, the consuming public perceives extra value in relationships with

BEEF PRODUCTS COMMITTEE

locally raised and processed beef which grows a new market segment for the Iowa beef industry and its differentiated beef producers.

WHEREAS, the economic development of these market segments and consumer trends are important to the Iowa beef industry and the producers in the industry.

WHEREAS, the local food system providing these products and services is important in community food capacity.

THEREFORE, BE IT RESOLVED, the Iowa Cattlemen's Association supports further research, development and engagement by the beef industry as local food systems and local processing grow to larger markets for our future.

BP-GCM-11 International Markets 2019

WHEREAS, international markets for beef can have a positive impact on U.S. beef production; and

WHEREAS, import quotas and non-tariff trade barriers restrict access of U.S. beef products into many foreign markets.

THEREFORE, BE IT RESOLVED, the Iowa Cattlemen's Association continues its efforts to encourage government officials in negotiating for expanded international markets for beef and beef products and for the elimination of non-tariff trade barriers.

BP-GCM-27 Export Assistance Funding 2022

WHEREAS, the United States Meat Export Federation (USMEF) has received substantial financial assistance per year in export assistance; and

WHEREAS, the Market Access Program (MAP) and its predecessor programs dating back to 1987 have provided the USMEF a source of additional funding to expand U.S. beef exports to over 80 nations.

THEREFORE, BE IT RESOLVED, the Iowa Cattlemen's Association supports export assistance programs such as MAP and is in favor of making a high percentage of all export assistance funds available for the export of value-added products such as beef.

BP-GCM-35 Support for Iowa Beef Checkoff Fund 2022

WHEREAS, the Iowa Beef Checkoff has been reinstated by a referendum majority vote by Iowa cattle producers as per Iowa Code Chapter 181; and

WHEREAS, the Iowa Cattlemen's Association compiled industry input used to update Iowa Code Chapter 181; and

WHEREAS, the Iowa Cattlemen's Association membership and other industry input was used throughout the process from the fulfillment of a producer petition to the completion of a vote.

THEREFORE, BE IT RESOLVED, the Iowa Cattlemen's Association continue to provide support and input to the Iowa Beef Industry Council to ensure funds derived from the assessment are utilized fully for the betterment, success and sustainability of Iowa's beef industry and its producers.

BEEF PRODUCTS COMMITTEE

BP-GCM-36 Usage of Iowa Beef Checkoff Funding 2022

WHEREAS, Iowa Beef Checkoff funds can be used more flexibly to support and enhance Iowa's beef business outside the scope of National Beef Checkoff funding; and

WHEREAS, Iowa producers have indicated favorable support toward utilizing funds more strategically for Iowa beef industry targeted needs.

THEREFORE, BE IT RESOLVED, the Iowa Cattlemen's Association continue to identify industry resource needs.

BE IT FURTHER RESOLVED, the Iowa Cattlemen's Association work with the Iowa Beef Industry Council for the betterment of Iowa's beef industry.

BP-GCM-37 USDA Quality Grades & Consumer Clarity 2019 in Retail Marketing

WHEREAS, USDA Quality Grades of Prime, Choice, and Select have a long history in the beef industry to indicate quality of beef products and have become an inherent part of the beef marketing system in the U.S.; and

WHEREAS, the U.S. consumer uses beef quality grades for product selection; and

WHEREAS, utilizing paralleled terminology when grading meat domestically will cause consumer confusion much like the recent retail cut nomenclature changes.

THEREFORE, BE IT RESOLVED, the Iowa Cattlemen's Association supports use of the terms "prime", "choice", and "select" exclusively by the beef industry to indicate level of quality and market product.

BP-GCM-38 Harmony in Beef Promotion 2020

WHEREAS, the Iowa Cattlemen's Association has supported and does support alternative beef markets such as all natural, implant free, humanely treated, antibiotic free, etc.

WHEREAS, the absence of health-enhancing and performance-improving technologies such as implants, beta agonists, antimicrobials does not improve beef safety and wholesomeness.

And WHEREAS, certain niche beef marketing programs have promoted their products as safer or more healthful than conventionally produced beef.

THEREFORE, BE IT RESOLVED, the Iowa Cattlemen's Association work cooperatively with all beef marketers to eliminate beef advertising which promotes niche beef products favorably, while also implying that conventionally fed beef is less safe or wholesome for consumers.

BP-GCM-39 Transparency in Labeling 2022

WHEREAS, the Iowa Cattlemen's Association supports clear retail labeling of beef products to reduce consumer confusion at the point of purchase; and

WHEREAS, the potential for ambiguous labeling of beef products without meaningful audit and verification is a cause for concern among beef producers across the country; and

BEEF PRODUCTS COMMITTEE

WHEREAS, the U.S. Department of Agriculture (USDA) currently oversees multiple, voluntary Process Verified Programs (PVPs) that include source of origin claims, and those PVPs have a proven track record of adding value to enrolled cattle, the flexibility to adapt to the needs of producers, and have been designed and tested by cattlemen in real-world production.

THEREFORE, BE IT RESOLVED, the Iowa Cattlemen's Association supports USDA verification of any source of origin claim or label.

BP-GCM-40 WTO-Compliant MCOOL for Beef 2022

WHEREAS, consumers deserve to know the origin of their beef; and

WHEREAS, current USDA labeling requirements allow for imported beef to be mislabeled as domestic beef.

THEREFORE, BE IT RESOLVED, the Iowa Cattlemen's Association supports the implementation of a World Trade Organization (WTO)-compliant mandatory country of origin labeling for beef.

NUTRITION HEALTH & INFORMATION

BP-NHI-4 Beef Team 2022

WHEREAS, continued efforts of anti-beef campaigns directed at children and young people are being witnessed; and

WHEREAS, many young people with an interest in beef production say they need to address such issues as environmental stewardship, diet/health, food safety, and animal care when conversing with their peers and others.

THEREFORE, BE IT RESOLVED, the Iowa Cattlemen's Foundation commit to message development and spokesperson training of Iowa's youth, ages 12 to 18, who are willing to put their training to use on behalf of the cattle industry.

BE IT FURTHER RESOLVED, the Iowa Cattlemen's Association recommends that once each year the Iowa Cattlemen's Foundation select from the trainees up to three (3) "Outstanding Communicators", and recognize their achievements with a scholarship to the college or university of their choice.

BE IT FURTHER RESOLVED, all county beef queens would be eligible to apply for these scholarship awards along with Youth Beef Team trainees as defined above.

BP-NHI-10 National Beef Checkoff Program 2021

WHEREAS, a strong working relationship between state beef industry councils and state cattlemen associations are necessary; and

WHEREAS, state cattlemen's associations take a very active role in promoting the passage of the federal beef checkoff program; and

WHEREAS, the Beef Promotion and Research Board has passed guidelines intended to clarify the Federal Act and Order; and

WHEREAS, caution needs to be exercised by the Beef Promotion and Research Board to further define the use of the federal beef checkoff program.

BEEF PRODUCTS COMMITTEE

THEREFORE, BE IT RESOLVED, the Iowa Cattlemen's Association oppose any action by the Beef Promotion and Research Board, the Secretary of Agriculture, or any other entity that would pursue action to eliminate the rights of the state beef councils given them in the Beef Promotion and Research Act.

BP-NHI-11 Food Safety **2020**

WHEREAS, there is an increasing incidence of foodborne pathogens reaching consumers through a variety of foods they eat including such foods as fruits, vegetables, juices, meat and poultry, water, eggs, cereal; and

WHEREAS, the cause of foodborne illness can be traced to all levels of the food chain, from farm to processing to manufacturing to distribution to foodservice to retail to home preparation; and

WHEREAS, consumers have a responsibility for understanding how to handle food safely, yet have a lower level of food handling and preparation skills.

THEREFORE, BE IT RESOLVED, the beef industry supports and should take part in Iowa's Food Safety Task Force that brings all segments of Iowa's food system together to share expertise and information within member organizations and with consumers to help insure that Iowans have a safe food supply and know how to properly handle food.

BP-NHI-12 Public Education **2020**

WHEREAS, information regarding the cattle industry's effects on the environment and other pertinent information concerning food safety, human safety, etc. is often misstated through electronic, digital, and print media, and has a negative impact on the cattle industry; and

WHEREAS, working with the media, as well as conservation and wildlife organizations, would enhance our communication efforts.

THEREFORE, BE IT RESOLVED, the Iowa Cattlemen's Association utilize all materials and publications available and applicable to increase public awareness on the benefits of the cattle industry has concerning the environment, wholesomeness and availability of our food supply, and human health.

BP-NHI-13 Lean Beef in Nutritional Programs **2019**

WHEREAS, dietary guidelines for school lunches and other public nutrition programs are being re-evaluated by public agencies.

THEREFORE, BE IT RESOLVED, the Iowa Cattlemen's Association, the National Cattlemen's Beef Association and the beef industry leaders encourage these agencies to include nutritious beef in their programs.

BP-NHI-14 Media Coverage **2020**

WHEREAS, some public news releases, stories, documentaries, and other news programs give only one side of the story or otherwise project incorrect information and impressions on the public with respect to food and its production and

BEEF PRODUCTS COMMITTEE

distribution.

THEREFORE, BE IT RESOLVED, the Iowa Cattlemen's Association encourages all media to present factual and complete information including photographs and visual footage on food and its production and distribution; further pledge the assistance of the Association toward this end and encourage the National Cattlemen's Beef Association to do the same.

BP-NHI-15 Health/Obesity 2020

WHEREAS, the prevalence of American obesity threatens the health of both adults and children; and

WHEREAS, the beef industry, through beef checkoff funded programs, has been proactive in communicating the nutritional benefits of beef to consumers, health professionals, the media and educators.

THEREFORE, BE IT RESOLVED, the beef industry continue efforts with government agencies, health organizations and the media, to make naturally nutrient-rich foods, including beef, a part of the solution to our state's/nation's obesity problem.

BP-NHI-16 Alternative Meats 2019

WHEREAS, the interest and investment in cellular agriculture, and synthetically produced muscle fibers, and plant-based alternative proteins has increased; and

WHEREAS, product described above has been referred to as 'meat' in an effort to indicate replacements for animal protein sources; and

WHEREAS, if economically feasible, 'FAKE MEAT' could greatly impact the cattle market; and

WHEREAS, there is a lack of scientific research to ensure the health and safety of cellular agriculture products; and

WHEREAS, the FDA and USDA has no current regulatory measures in place to monitor the development of the technology; and

WHEREAS, utilizing terminology traditional to the meat and livestock industry to describe proteins created through cellular agriculture will cause consumer confusion; and

WHEREAS, cattle producers have an interest in protecting consumer confidence in beef produced from live animals;

THEREFORE, BE IT RESOLVED, the Iowa Cattlemen's Association supports use of the term "meat" to describe only those proteins derived from actual livestock raised by farmers and ranchers harvested for human consumption.

THEREFORE, BE IT FURTHER RESOLVED, the Iowa Cattlemen's Association supports oversight of alternative protein products by the U.S. Department of Agriculture.

BUSINESS ISSUES COMMITTEE

TABLE OF CONTENTS

AGRICULTURE POLICY

BI-AP-D-14	CRP	18
BI-AP-1	Support Forage Experiments	18
BI-AP-2	Dairy Policy	18
BI-AP-7	Compulsory Union Membership	18
BI-AP-9	Federal Grazing Fees	19
BI-AP-10	Disaster Assistance	19
BI-AP-11	Loss of Market Competition	19
BI-AP-13	Hunting Access	19
BI-AP-14	Grazing Land Availability	19
BI-AP-15	Definition of Crop	20
BI-AP-24	Cattlemen Serving as Local Leaders	20
BI-AP-26	Right-of-Way Fencing	20
BI-AP-27	Farm Programs	20
BI-AP-29	Regents & IDALS Funding	21
BI-AP-31	Iowa Fence Law	21
BI-AP-33	Iowa State University Support	22
BI-AP-34	Regulation of Livestock Haulers	22
BI-AP-35	Immigration	22
BI-AP-36	Interstate Highway Weight Limits	23
BI-AP-37	Rainfall Index & Grid System	23
BI-AP-38	Climate Change	23
BI-AP-39	CRP Guiding Principles	24

PUBLIC/PRIVATE LANDS & ENVIRONMENTAL MANAGEMENT

BI-PPLEM-3	Taking Private Property	25
BI-PPLEM-4	Criminal Trespass Law	25
BI-PPLEM-5	Underground Water Supplies	25
BI-PPLEM-6	Separation Distances	26
BI-PPLEM-9	Endangered Species	26
BI-PPLEM-11	Land Use	26
BI-PPLEM-13	Environment & Property Rights Representation	26
BI-PPLEM-14	Soil Conservation	27
BI-PPLEM-18	Land Acquisition	27
BI-PPLEM-22	Resource Enhancement & Protection (REAP) Congress	28
BI-PPLEM-28	Zoning Exemption for Agricultural Facilities	29
BI-PPLEM-31	Iowa Slough Bill	29
BI-PPLEM-33	Pilot Projects/Public Grazing	29
BI-PPLEM-36	Livestock Feeding Regulations	29
BI-PPLEM-37	Environmental Planning	30
BI-PPLEM-39	Accidental Spills Penalties	30
BI-PPLEM-40	Wetland Definition	30
BI-PPLEM-41	Wildlife Control	30
BI-PPLEM-42	Predators	31
BI-PPLEM-46	Non-Point Source Pollution	31
BI-PPLEM-47	Environmental Quality/Local Control	31
BI-PPLEM-48	Nuisance Lawsuits	32
BI-PPLEM-49	Wildlife Carcass Disposal	32

BUSINESS ISSUES COMMITTEE

BI-PPLEM-50	Clean Air.....	32
BI-PPLEM-51	Nutrient Reduction Strategy.....	32
BI-PPLEM-52	Unmanned Aerial Vehicle (UAV) Use.....	33
BI-PPLEM-53	Land & Water Stewardship.....	33
BI-PPLEM-54	U.S. Army Corps of Engineers.....	32
BI-PPLEM-55	Anaerobic Digestion Systems.....	33
BI-PPLEM-56	Waters of the U.S.....	34
BI-PPLEM-57	Hazardous Liquid Pipeline Setback Distance.....	34
BI-PPLEM-58	Eminent Domain.....	35

TAX AND FINANCE

BI-TF-3	Balanced Budget.....	35
BI-TF-7	Job Creation.....	35
BI-TF-9	School & Bond Issues.....	35
BI-TF-13	Property Tax Exemption for Pollution Control Systems.....	36
BI-TF-15	Foot & Mouth Disease Indemnity Fund.....	36
BI-TF-18	Road Use Tax Fund.....	36
BI-TF-20	Incentives for Livestock Facilities.....	36
BI-TF-23	Unemployment Compensation.....	36
BI-TF-30	Livestock Production Incentive Refund.....	37
BI-TF-31	Agricultural Tax Credit.....	37
BI-TF-32	Social Security Exemption on Cooperative Dividends.....	37
BI-TF-33	Property Tax Levies.....	38
BI-TF-34	Federal Estate Tax.....	38
BI-TF-35	Gift Exemption.....	39
BI-TF-36	Renewable Fuels & Co-Products.....	39
BI-TF-37	Capital Gains.....	39
BI-TF-38	Fuel Taxes and Pickup License Fees.....	39
BI-TF-39	Agricultural Property Tax Adjustment.....	39
BI-TF-40	Support for Section 179 Depreciation.....	40
BI-TF-41	State of Emergency & Essential Workers.....	40
BI-TF-42	Rural Broadband.....	40

BUSINESS ISSUES COMMITTEE

AGRICULTURE POLICY

BI-AP-D-14 **CRP** **2023**

WHEREAS, 5 percent of Iowa's pastureland was converted to cropland from 2012 to 2017 and economic pressures continue to accelerate conversion of grazing lands for competing uses; and

WHEREAS, the Conservation Reserve Program (CRP) is one of the largest private-lands conservation programs in the United States; and

WHEREAS, current CRP rules provide landowners restricted access to periodically hay or graze forage from CRP acres; and

WHEREAS, adapting CRP rules to encourage livestock on the land and provide greater flexibility to hay and graze may maximize environmental benefit; and

WHEREAS, incorporating cattle into perennial grasslands can contribute to conservation goals.

THEREFORE, BE IT DIRECTED, the ICA Cow-Calf Council shall consult the NRCS, FSA, and other stakeholders for opportunities to provide more flexibility to CRP for Iowa's cattle producers.

BI-AP-1 **Support Forage Experiments** **2023**

WHEREAS, the Iowa Cattlemen's Association recognizes the importance of grass and forage establishment to the cattle industry.

THEREFORE, BE IT RESOLVED, the Iowa Cattlemen's Association recognizes and supports ongoing forage research and experiments conducted by all entities in the State of Iowa.

BI-AP-2 **Dairy Policy** **2023**

WHEREAS, Congress has spent considerable time and resources on dairy policy and a satisfactory solution has not been forthcoming; and

WHEREAS, the solution may have significant economic impact on both the dairy and beef industry.

THEREFORE, BE IT RESOLVED, the Iowa Cattlemen's Association urges the National Cattlemen's Beef Association to continue to work with the dairy industry in finding a long-range solution to dairy policy that will be beneficial and acceptable to both the dairy and beef industry.

BI-AP-7 **Compulsory Union Membership** **2019**

WHEREAS, compulsory union membership is contrary to the basic principles of individual freedom upon which this nation was founded.

THEREFORE, BE IT RESOLVED, the Iowa Cattlemen's Association will defend the provisions of state and federal law which assures enactment of "Right to Work" laws, and insists the law be enforced against secondary boycotts.

BE IT FURTHER RESOLVED the Iowa Cattlemen's Association opposes any existing legislation or legislation which may be proposed, that would extend the

BUSINESS ISSUES COMMITTEE

authorization of compulsory unionism to all related agricultural employees or to any other employees not now covered by such provision.

BI-AP-9 Federal Grazing Fees **2021**

WHEREAS, the Iowa Cattlemen's Association supports economic equality in all regions of the country; and

WHEREAS, public awareness and competition for public lands may cause re-assessment of grazing fee formulas.

THEREFORE, BE IT RESOLVED, the Iowa Cattlemen's Association favors establishment of federal grazing fees at fair rates.

BI-AP-10 Disaster Assistance **2022**

WHEREAS, in the event of any future disaster assistance programs, gross income may be used as a criteria of eligibility.

THEREFORE, BE IT RESOLVED, replacement feeder cattle and other purchased inputs should be deducted when determining disaster assistance eligibility.

BI-AP-11 Loss of Market Competition **2019**

WHEREAS, the trend of mergers and mega mergers within the economic structure of world business continues at an unprecedented pace; and

WHEREAS, the result of these mergers results in fewer and fewer choices in the fields of finance, supply and product processing, thereby reducing competition in all areas.

THEREFORE, BE IT RESOLVED, the Iowa Cattlemen's Association supports preservation of a competitive business climate for all producers.

BI-AP-13 Hunting Access **2019**

WHEREAS, Iowa cattle producers are private property landowners; and

WHEREAS, many Iowa cattlemen voluntarily allow people to hunt, or lease hunting rights.

THEREFORE, BE IT RESOLVED, the Iowa Cattlemen's Association work to ensure that cattle producers are not forced to give unrestricted public access to private land which has received federal funding related to conservation assistance and farm programs.

BI-AP-14 Grazing Land Availability **2019**

WHEREAS, Iowa's beef industry is competing for pasture ground with government programs;

THEREFORE, BE IT RESOLVED, the Iowa Cattlemen's Association continuously monitor the implementation of the new Farm Bill and state policies and regulations and make interim policy as necessary to encourage the continuation of Iowa's beef industry.

BUSINESS ISSUES COMMITTEE

BI-AP-15 Definition of Crop 2020

WHEREAS, the harvested crop is the grain and the residue including corn stalks, corn cobs, bean straw, oat straw, wheat straw, etc.; and

WHEREAS, corn stalk and soybean straw are important bedding materials, feed stuffs and material for cellulosic ethanol plants and anaerobic digesters; and

WHEREAS, confusion may exist as to what constitutes a crop for farm lease purposes.

THEREFORE, BE IT RESOLVED, the Iowa Cattlemen's Association supports the definition of crops to include harvested residue.

BI-AP-24 Cattlemen Serving as Local Leaders 2022

WHEREAS, involvement in farm program administration is important.

THEREFORE, BE IT RESOLVED, the Iowa Cattlemen's Association encourages members to gain County Farm Service Agency Committee positions, District Soil and Water Commission seats, Township Trustees and Zoning Commissioners, and local conservation work groups.

BI-AP-26 Right-of-Way Fencing 2023

WHEREAS, federal interstate highways and railroads are all bordered by fences originally constructed by the right-of-way holder; and

WHEREAS, those fences have fallen into disrepair.

THEREFORE, BE IT RESOLVED, the Iowa Cattlemen's Association work to encourage these entities to repair and maintain these fences.

BI-AP-27 Farm Programs 2023

WHEREAS, the Iowa Cattlemen's Association believes that the federal government's involvement in agriculture through feed grain programs are often detrimental to the cattle industry; and

WHEREAS, government programs of the past have benefited one segment of agriculture without considering the impact on another.

THEREFORE, BE IT RESOLVED, the Iowa Cattlemen's Association provides the following recommendations to Congress and the U.S. Department of Agriculture for formulating and administering future farm policies:

1. Eliminate from all farm programs discrimination against the cattle industry in the area of base acreage and normal crop acres, base yields, loan privileges, including hay and silage loans, and soil conservation.
2. Farm policies should be developed having both long and short term objectives.
3. The intent of American farm policy should be profitable markets with emphasis on producing and exporting value added products.
4. Farm programs should be market oriented though providing a price safety net somewhere below the variable cost of production which could be adjusted seasonally.

BUSINESS ISSUES COMMITTEE

5. Strategic reserves should be maintained as hedges against disaster and to assure the world that the United States is a reliable supplier. Reserves should NOT be used to control or influence prices.
6. Farm policy must promote soil conservation, soil health, and the best management practices to protect and preserve our natural resources.
7. Policies should not be formulated so as to favor one segment of agriculture over another.
8. Federal Crop Insurance must become more cost efficient and coverage should be expanded to cover the commonly produced pasture and hay crops. Yield coverages must be raised and should be calculated on a field-by-field and farm-by-farm basis.
9. Fiscal responsibility is a concern of Iowa cattlemen. We recognize that all segments of our economy will have to respond by decreased spending to facilitate balancing the budget; however balancing the federal budget with proportionate cuts in spending should not be accomplished at the expense of the cattle industry and agriculture.
10. We endorse efforts to reduce the real interest rates for agriculture.
11. Future farm legislation should be announced prior to the expiration or continuation of the current farm bill.
12. The importance of local governance and oversight at Farm Services Agency offices increases with the complexity of current farm programs (e.g. LDP payments). Iowa Cattlemen's Association strongly urges that local boards be empowered to make decisions regarding strictly local issues and/or entities.
13. A minimum of 60% of the Environmental Quality Incentives Program funds be spent on livestock conservation and incentive production projects on a federal basis.

BI-AP-29 Regents & IDALS Funding 2020

WHEREAS, Iowa agriculture depends on Iowa State University to educate our young people interested in careers in agriculture, to conduct agricultural research, and to deliver information to the citizens of Iowa; and

WHEREAS, Iowa citizens depend on the Iowa Department of Agriculture and Land Stewardship (IDALS) for a wide variety of protection programs including meat processing, commercial feed and fertilizer, pesticide application, weights and measures and animal health.

THEREFORE, BE IT RESOLVED, the Iowa Cattlemen's Association encourages the State of Iowa to prioritize funding to the Board of Regents and IDALS to address these critical agricultural issues.

BI-AP-31 Iowa Fence Law 2022

WHEREAS, the Iowa Cattlemen's Association supports the current Iowa fence law.

THEREFORE, BE IT RESOLVED, landowners should be encouraged to reach a written agreement regarding their border fences and file them with the county recorder.

BUSINESS ISSUES COMMITTEE

BI-AP-33 Iowa State University Support 2020

WHEREAS, the Iowa State University College of Agriculture and Life Sciences, the Iowa State University Bioeconomy Institute, and the College of Veterinary Medicine recognize the importance of future science and technology needs for animal agriculture; and

WHEREAS, the College of Agriculture and Life Sciences (including the Animal Science Department), the Iowa State University Bioeconomy Institute, and the College of Veterinary Medicine have asked for industry partners to develop strategies for identifying and funding these critical technologies.

THEREFORE, BE IT RESOLVED, the Iowa Cattlemen's Association supports and encourages efforts to secure sufficient funding at Iowa State University to help strengthen sustainability for Iowa's beef cattle industry.

BI-AP-34 Regulation of Livestock Haulers 2020

WHEREAS, cattle producers in Iowa purchase cattle that require transportation over long distances; and

WHEREAS, getting livestock to the intended destination in a timely manner is critical for the livestock and the owner; and

WHEREAS, increased regulation of hours of service will increase freight cost of cattle coming into Iowa; and

WHEREAS, unloading livestock and waiting until the hours of service may resume to continue to the desired destination further increases risk and liability for the producer and freight hauler.

THEREFORE, BE IT RESOLVED the Iowa Cattlemen's Association supports an exemption of Hours of Service and Electronic Logging Device requirements for livestock haulers.

BI-AP-35 Immigration 2019

WHEREAS, the agriculture industry is important to the economic vitality of Iowa; and

WHEREAS, Iowa's cattle producers are in constant need of farm workers of all skill levels to provide stability of the agricultural workforce.

THEREFORE, BE IT RESOLVED, the Iowa Cattlemen's Association supports immigration policy that provides a legal and efficient way for immigrant workers and their immediate families to enter the U.S. to work as guest workers and be able to renew that guest worker status as needed.

BE IT FURTHER RESOLVED, the Iowa Cattlemen's Association supports policy that uses these legal entrances as a pathway to citizenship and encourages immigrants to enter our country legally.

BE IT FURTHER RESOLVED, the Iowa Cattlemen's Association supports policy allows guest workers to obtain a driver's license to be able to commute to their employment.

BUSINESS ISSUES COMMITTEE

BI-AP-36 Interstate Highway Weight Limits 2020

WHEREAS, other states in the union allow interstate travel of triple and spread axle trucks with weight limits over 80,000 lbs.; and

WHEREAS, in Iowa it is legal to travel on state roads with triple and spread axle trucks over 80,000 lbs. gross; and

WHEREAS, any livestock trucks weighing over 80,000 lbs. have no feasible way to travel through Des Moines.

THEREFORE, BE IT RESOLVED, should the opportunity arise, the Iowa Cattlemen's Association should work towards instituting the travel of triple and spread axle trucks grossing over 80,000 lbs. on interstate highways.

BI-AP-37 Rainfall Index & Grid System 2022

WHEREAS, Rainfall Index (RI) reflects how much precipitation is received relative to the long-term average for a specified area and timeframe, based on rainfall monitors within the National Oceanic and Atmospheric Administration Climate Prediction Center grid system; and

WHEREAS, various insurance programs, such as the Pasture, Rangeland, Forage (PRF) and Annual Forage Programs, utilize the RI and the grid system to determine eligibility for indemnity payments; and

WHEREAS, insurance programs insure based on general geographic area, not individual farm location; and

WHEREAS, a rainfall monitor in close proximity to an individual farm may not be in the same grid; and

WHEREAS, a singular, high-intensity rain event may disproportionately influence data used to determine eligibility for indemnity payments.

THEREFORE, BE IT RESOLVED, the Iowa Cattlemen's Association shall consult the Risk Management Agency regarding opportunities to suggest improvements to the current RI and grid system.

BI-AP-38 Climate Change 2022

WHEREAS, national and international publications on modern livestock production, environmental activists, entities that produce plant-based meat alternatives, and animal rights activists have accused animal agriculture of being a primary contributor of greenhouse gas (GHG) emissions; and

WHEREAS, some states have promulgated regulations to mandate reductions of GHG emissions; and

WHEREAS, cattle upcycle cellulose and carbon through enteric fermentation, releasing methane as part of the biogenic carbon cycle; and

WHEREAS, methane has a shorter lifespan in the atmosphere than carbon dioxide; and

WHEREAS, cattle producers are the original stewards of the land and natural resources.

THEREFORE, BE IT RESOLVED, the Iowa Cattlemen's Association supports research related to cattle and climate-smart agricultural practices.

BUSINESS ISSUES COMMITTEE

BE IT FURTHER RESOLVED, the Iowa Cattlemen's Association shall support the development of a voluntary, science-based carbon credit program, providing credits for practices already implemented by early adopters.

BE IT FURTHER RESOLVED, the Iowa Cattlemen's Association shall oppose efforts to regulate GHG emissions under the Clean Air Act.

BI-AP-39 **CRP Guiding Principles** **2023**

The Iowa Cattlemen's Association will:

1. Work to reduce economic pressures that accelerate the conversion of grazing lands for competing uses.
2. Oppose efforts to increase the total number of CRP contract acres.
3. Encourage managed grazing of CRP contract acres throughout the entire grazing season, which includes the primary nesting season.
4. Work with key stakeholders, including wildlife groups, to promote best management practices that balance the needs of cattle, wildlife, and our natural resources.
5. Educate producers on the importance of managed grazing and using CRP as a recovery tool to improve existing pastures.
6. Continue to support non-emergency haying and grazing of CRP contract acres and when necessary, emergency haying and grazing of CRP contract acres, as part of a NRCS management plan, while advocating for no payment reductions.

We believe:

1. CRP should be targeted for marginal land, not productive acres or entire farms.
2. Government programs, like CRP, should not compete with farmers and ranchers and should not price pasture out of production. CRP rental rates should be less than private sector pasture rental rates within the county where contract acres are located.
3. Legumes and cool- and warm-season forage mixes should be prioritized on CRP contract acres.
4. Managed grazing can suppress noxious weeds.
5. Local program oversight is important.
6. Cattle producers should influence farm programs, like CRP, at the local level through FSA county committees.
7. Cattle producers should comply with NRCS conservation and management plans on CRP contract acres.
8. CRP buffer strips, headlands, and waterways may be grazed as a management practice.

BUSINESS ISSUES COMMITTEE

PUBLIC/PRIVATE LANDS & ENVIRONMENTAL MANAGEMENT

BI-PPLEM-3 Taking Private Property 2019

WHEREAS, sound environmental policy must balance protection of the environment with other equally important state interests like economic growth of the lowa cattle industry, availability of food and affordable housing.

THEREFORE, BE IT RESOLVED, all regulations which affect the use or value of property should be reviewed to insure that they do not restrict an owner's use of that property.

BE IT FURTHER RESOLVED, the taking of a person's property or restriction of use by regulation shall be justly compensated.

BE IT FURTHER RESOLVED, government agencies should exercise that power responsibly and should never act arbitrarily and are aware of the true cost of regulations.

BI-PPLEM-4 Criminal Trespass Law 2023

WHEREAS, prior written permission to enter property would provide an evidentiary basis for enforcement of the trespass law as well as providing a potential legal basis for reduced personal liability.

THEREFORE, BE IT RESOLVED, the Iowa Cattlemen's Association recommends any further change of trespass law to require written permission to enter any property.

BI-PPLEM-5 Underground Water Supplies 2019

WHEREAS, the cattle industry in Iowa depends heavily on underground water supplies; and

WHEREAS, the potability of such underground water is important to Iowa's beef cattle producers.

THEREFORE, BE IT RESOLVED, the Iowa Cattlemen's Association urges its members to take whatever steps they can to prevent the pollution of underground water supplies by building properly constructed wells, plugging abandoned wells, using best environmental management practices for organic nutrient utilization and nitrogen management and proper surface water drainage systems.

BE IT FURTHER RESOLVED, the goal of non-degradation of groundwater is supported by the Iowa Cattlemen's Association, but until adequate research is completed upon which to base decisions, we urge restraint in developing rules to achieve this goal.

BE IT FURTHER RESOLVED, the Iowa Cattlemen's Association supports funding for costs incurred from additional regulations or guidelines applied by state or local agencies concerning the correct plugging of abandoned water wells.

BUSINESS ISSUES COMMITTEE

BI-PPLEM-6 Separation Distances 2019

WHEREAS, current laws require that new livestock facilities are required to maintain a separation distance from existing dwellings and public use areas.

THEREFORE, BE IT RESOLVED, new residences, subdivisions and public use areas in rural areas should be required to meet the maximum separation distances from existing livestock operations that new livestock facilities must meet from existing residences. Residential and subdivision owners may obtain a recorded waiver from the separation distance from the neighboring livestock operation.

BI-PPLEM-9 Endangered Species 2020

WHEREAS, the Environmental Protection Agency's (EPA) endangered species protection program places unwarranted and potentially devastating restrictions on the cattle industry and all agriculture.

THEREFORE, BE IT RESOLVED, the Iowa Cattlemen's Association supports a complete delay on listings until:

1. A Federal Register Notice is issued soliciting public comment on each new listing;
2. A complete public review of all U.S. Fish & Wildlife Service Jeopardy Opinions for any species being listed;
3. An Economic Assessment of the impacts to agriculture;
4. An Environmental Impact Study has been prepared;
5. National, state and local hearings are conducted for each new listing;
6. All endangered species ranges are updated, justified and verified;
7. Clear goals for recovery and criteria for de-listing of a species are developed prior to listing of that species; and
8. Alternate programs are explored.

BI-PPLEM-11 Land Use 2021

WHEREAS, the issue of land use in Iowa becomes increasingly important as Iowa population grows and the use of its land becomes more intensified; and

WHEREAS, the cattlemen of Iowa have distinctive problems and interests in the use of land for production of beef cattle; and

WHEREAS, the complexities of the many issues and interests involved are substantial, not the least of which are the preservation of private property rights and the location of control over land-use decisions.

THEREFORE, BE IT RESOLVED, land suitable for the grazing of livestock should be deemed agricultural land worthy of preservation and that grazing be given preference over recreational and/or urban uses.

BE IT FURTHER RESOLVED, public lands should be subject to the same laws, rules and regulations as privately-owned lands.

BI-PPLEM-13 Environment & Property Rights 2022 Representation

WHEREAS, the Iowa Cattlemen's Association's diverse membership includes

BUSINESS ISSUES COMMITTEE

producers with experience and expertise in all facets of cattle production; and

WHEREAS, the Iowa Cattlemen's Association employs a professional staff capable of communicating the importance and interests of the cattle industry to elected officials, agencies and the general public; and

WHEREAS, the Iowa Cattlemen's Association has historically been active in preserving and promoting the cattle industry in Iowa.

THEREFORE, BE IT RESOLVED, if new environmental or property rights legislation or regulation is proposed which would impact the cattle industry, the Iowa Cattlemen's Association will represent cattle producers' interests to the fullest extent possible.

BI-PPLEM-14 Soil Conservation 2022

WHEREAS, the preservation of Iowa's productive topsoil is of concern to all segments of society; and

WHEREAS, we have learned a great deal about effective soil conservation practices; and

WHEREAS, Iowa still has a considerable number of marginal acres that are of too high a degree of slope to have acceptable levels of soil loss regardless of conservation practice when intensively row-cropped.

THEREFORE, BE IT RESOLVED, the Iowa Cattlemen's Association develops promotional and educational programs to call attention to this problem and promote the conversion and maintenance of these acres, subject to severe erosion, to grass and forage production, which can only be utilized by ruminant animals and Iowa Cattlemen's Association supports that funding of soil conservation cost share be maintained at current funding levels or above.

BE IT FURTHER RESOLVED, the Iowa Cattlemen's Association work with state and federal government to insure that programs addressing soil conservation recognize the role that the beef industry can play in addressing this problem and that these programs do not discriminate against the beef industry.

BI-PPLEM-18 Land Acquisition 2019

WHEREAS, the State of Iowa is primarily comprised of agricultural land consisting of row crop, pasture and timberland; and

WHEREAS, much of the state-owned land including state parks, recreational areas and preserves needs to be improved and repaired; and

WHEREAS, ownership of ground by the state relinquishes it from the tax rolls which inevitability raises taxes.

THEREFORE, BE IT RESOLVED, the Iowa Cattlemen's Association discourages the purchases of agricultural land by the federal, state, county, and/or local governments and encourage the use of acquisition funds for improving existing properties as suggested in the "Private Property Enhancement Alternatives" and listed below:

- I. Alternatives should be implemented on a voluntary basis only, as individual management systems vary
- II. Private Alternatives for Wildlife Habitat
 - A. Encourage owners to set aside plots for wildlife habitat, i.e. existing

BUSINESS ISSUES COMMITTEE

- building sites, existing ditches
- B. Food plots on CRP acres
- C. Protecting nesting areas on grassland
 1. Short-term rental by groups; i.e. Pheasants Forever
 2. Rotational grazing
 3. Warm season grasses
- D. Establish leasing program on grassland currently enrolled in CRP
- E. Incentive for owner to leave CRP in grassland at maturity of contract
- III. Alternative for Preventing Soil Erosion
 - A. Establish permanent vegetation on D & E slopes
 - B. Establish living snow fence and shelterbelts
 - C. Conservation tillage
 - D. Trees on CRP acres
- IV. Water Quality
 - A. Improvement of existing lakes to enhance fish habitat
 - B. Construction of farm ponds and dugouts for runoff control
 - C. Grassland on watersheds
- V. Areas of Prairie Ecosystems
 - A. Establish native prairie grass and flowers on operating railroad right-of-ways
 - B. Plots previously mentioned under wildlife habitat
- VI. Education and Communication
 - A. Utilize expertise of DNR, ISU Extension, NRCS, FSA, U.S. Fish and Wildlife Service and wildlife and conservation groups to develop projects and programs funded by state and federal revenue. These projects and programs will utilize the management and labor resources of the private sector and thus guarantee success due to the "pride in a job well done" philosophy instilled in rural Iowa land-owners.

BE IT FURTHER RESOLVED, the Iowa Cattlemen's Association supports acquisition of private land for public use only to preserve special or unique natural areas, provided endowed management, maintenance, and tax funds be included as part of those purchases or gifts.

BI-PPLEM-22 Resource Enhancement & Protection 2022 (REAP) Congress

WHEREAS, the cattle industry in the State of Iowa is comprised of private land consisting of row crop, grazing land and timberland; and

WHEREAS, the actions taken by the Resource Enhancement and Protection (REAP) Congress have a direct impact on existing and future livestock operations through management practices and tax rates.

THEREFORE, BE IT RESOLVED, only delegates selected by the county Resource Enhancement and Protection (REAP) Committee to the regional REAP meeting be eligible to be selected as delegates to the REAP Congress and that federal, state and county employees and their spouses are not eligible to be delegates to the REAP Congress.

BUSINESS ISSUES COMMITTEE

BI-PPLEM-28 Zoning Exemption for Agricultural Facilities 2020

WHEREAS, counties may attempt to circumvent the Iowa Code by zoning agricultural facilities; and

WHEREAS, controversies regarding concentrated livestock facilities have escalated.

THEREFORE, BE IT RESOLVED, the Iowa Cattlemen's Association supports the continuation of the zoning exemption for agricultural purposes as contained in Chapter 335 of the Iowa Code.

BE IT FURTHER RESOLVED, agricultural purposes should be determined by definition contained in Chapter 701.71(3) of the Iowa Administrative Code.

BI-PPLEM-31 Iowa Slough Bill 2022

WHEREAS, the Iowa Slough Bill provides property tax relief for particular uses of land including: open prairies, forest cover, river and stream banks, and wildlife habitat; and

WHEREAS, the Iowa Slough Bill does not require restoration of such land to a native condition; and

WHEREAS, public assistance for restoration of native habitat is available through various agencies.

THEREFORE, BE IT RESOLVED, restoration of land to a condition such that a majority of the vegetation is consistent with a native habitat be required, and certified by a government naturalist, prior to being granted property tax relief.

BI-PPLEM-33 Pilot Projects/Public Grazing 2021

WHEREAS, managed grazing on public or private lands can both enhance the wildlife carrying potential of the land and allow for expansion of the cattle industry.

THEREFORE, BE IT RESOLVED, the Iowa Cattlemen's Association supports the implementation of managed grazing projects between public agencies and private cattle producers, in a feasible and practical manner for all parties.

BI-PPLEM-36 Livestock Feeding Regulations 2020

WHEREAS, Iowa's current environmental regulations are comparable to other major livestock producing states. In order to expand our livestock base, environmental concerns must be balanced with economic reality. New restrictions will drive the industry away from Iowa; and

WHEREAS, Iowa has a substantial portion of our nation's prime farmland and the ability to add value to the crops produced on that land through a thriving cattle industry which is vital to Iowa's economic success; and

WHEREAS, unreasonable environmental regulations will only impose more costs on our cattle producers.

THEREFORE, BE IT RESOLVED, the Iowa Cattlemen's Association opposes any changes to current state and federal regulations which would be adverse to the cattle industry, unless the changes are based on sound scientific and economic data.

BE IT FURTHER RESOLVED, the Iowa Cattlemen's Association encourages envi-

BUSINESS ISSUES COMMITTEE

ronmental research by Iowa State University, including the Bioeconomy Institute, and other entities that will provide viable economic solutions.

BE IT FURTHER RESOLVED, the Iowa Cattlemen's Association shall work closely with the DNR to further develop alternative technologies to enhance, and improve water quality at livestock operations.

BI-PPLEM-37 Environmental Planning **2020**

WHEREAS, cooperation and attitudes are important to good working relationships; and

WHEREAS, environmental concerns and the regulations relating to them are becoming increasingly important and sometimes controversial.

THEREFORE, BE IT RESOLVED, the Iowa Cattlemen's Association continues the policy of proactive participation with other organizations and governmental entities in environmental planning, stewardship, conservation, and resource enhancement.

BI-PPLEM-39 Accidental Spills Penalties **2023**

WHEREAS, clean water is important to everyone including Iowa's beef industry; and

WHEREAS, civil and criminal penalties are necessary to help ensure compliance.

THEREFORE, BE IT RESOLVED, the Iowa Cattlemen's Association work with the Iowa Legislature, EPA, and DNR to identify and deter intentional and repetitive violators.

BE IT FURTHER RESOLVED, that accidental manure spills should be no more than a civil penalty.

BI-PPLEM-40 Wetland Definition **2019**

WHEREAS, the cattle industry is directly impacted by pastureland vs. cropland that may be designated wetlands; and

WHEREAS, there is considerable confusion in determining the wetland definition.

THEREFORE, BE IT RESOLVED, the Iowa Cattlemen's Association supports the definition of wetlands by simultaneous actual presence of three naturally occurring criteria: hydric soils, hydrophilic vegetation and surface inundation for a significant portion of the growing season of every year under normal precipitation.

BI-PPLEM-41 Wildlife Control **2019**

WHEREAS, wildlife has the potential to cause damage to real and/or personal property in both the private and public sectors and may threaten human health and safety on occasion; and

WHEREAS, prevention and/or control of wildlife damage is an essential and responsible part of wildlife management.

THEREFORE, BE IT RESOLVED, the Iowa Cattlemen's Association encourages the State of Iowa provide an effective wildlife management program in Iowa

BUSINESS ISSUES COMMITTEE

that includes controlled hunting, trapping, and educational and research projects.

BI-PPLEM-42 Predators **2022**

WHEREAS, the cattle industry is vital to Iowa's economy; and

WHEREAS, the cattle industry and our human population are being threatened by predators and other species.

THEREFORE, BE IT RESOLVED, the Iowa Cattlemen's Association will oppose all attempts to give any type of legal protection to cougars, wolves and bears.

BI-PPLEM-46 Non-Point Source Pollution **2023**

WHEREAS, it is generally recognized that the use of best management practices reduce non-point source pollution; and

WHEREAS, control of non-point source pollution is dependent on scientifically based, site-specific application of best management practices; and

WHEREAS, research data is inadequate to scientifically outline what criteria should be established in developing mandatory regulations.

THEREFORE, BE IT RESOLVED, the Iowa Cattlemen's Association favor the voluntary use of best management practices for non-point pollution control and encourages its members and all segments of society to implement these practices whenever and wherever possible.

BE IT FURTHER RESOLVED, the Iowa Cattlemen's Association opposes the implementation of mandatory regulations for non-point sources of agricultural pollution.

BE IT FURTHER RESOLVED, if mandatory non-point source regulations are imposed over the Iowa Cattlemen's Association's objection, it is necessary that regulations be funded and be developed at the state level based on sound science where such decisions can best be made.

BI-PPLEM-47 Environmental Quality/Local Control **2023**

WHEREAS, clean water and air are essential to the health and well-being of all producers in the cattle industry; and

WHEREAS, water and air are precious resources that we manage to the benefit of social environmental and economic values that are important to the stability of our industry and with the understanding of our unique needs.

THEREFORE, BE IT RESOLVED, the appropriate agencies recognize the state's abilities to best manage the resources within their jurisdictions and that environmental laws shall not be interpreted to be more restrictive than statute.

BE IT FURTHER RESOLVED, Iowa environmental quality protection standards and regulations be established at the state level.

BE IT FURTHER RESOLVED, the Iowa Cattlemen's Association opposes local control of environmental standards and regulations.

BE IT FURTHER RESOLVED, the Iowa Cattlemen's Association supports statewide consistency of the Master Matrix application for counties that adopt the Master Matrix.

BUSINESS ISSUES COMMITTEE

BI-PPLEM-48 Nuisance Lawsuits

2022

WHEREAS, the steady increase of nuisance lawsuits in the state of Iowa against cattle producers has closed existing facilities; and

WHEREAS, the threat of nuisance lawsuits has discouraged many cattle producers from expanding facilities; and

WHEREAS, Iowa's Right to Farm Act does not protect Iowa cattle producers from nuisance lawsuits; and

WHEREAS, neighboring states have Right to Farm Acts that do protect their cattle producers from nuisance lawsuits; and

WHEREAS, anonymous reporting of feedlots' alleged violations occur without any accountability to the reporter and causes considerable inconvenience and cost to feedlot operators, many times without justification to the reported event.

THEREFORE, BE IT RESOLVED, the Iowa Cattlemen's Association supports changes to the Iowa Code to provide better protection for Iowa cattle producers from nuisance lawsuits.

BE IT FURTHER RESOLVED, the Iowa Cattlemen's Association supports changes to the Iowa Code to provide protection for the Iowa cattle producers from anonymous reporting of alleged violations.

BE IT FURTHER RESOLVED, the Iowa Cattlemen's Association work with the other agriculture organizations in the state of Iowa to achieve this change to the Iowa Code.

BI-PPLEM-49 Wildlife Carcass Disposal

2023

WHEREAS, improper disposal, removal and cleanup of wildlife carcasses and remains has potential to cause human and cattle health problems by threatening and contaminating our water sources, proper disposal must be an essential part of Wildlife Management.

THEREFORE, BE IT RESOLVED, the Iowa Cattlemen's Association encourages the Iowa Department of Natural Resources and Iowa Department of Transportation to enforce and carry out proper disposal of wildlife carcasses.

BI-PPLEM-50 Clean Air

2020

WHEREAS, the Iowa Cattlemen's Association supports working with commodity and farm associations/groups to assure that sound science is utilized in developing regulations that are transparent, workable and practical for future air quality standards.

THEREFORE, BE IT RESOLVED, that the Iowa Cattlemen's Association supports and encourages national and state committees and farm groups working together to achieve such standards based on sound science.

BI-PPLEM-51 Nutrient Reduction Strategy

2020

WHEREAS, a voluntary strategy to reduce nutrient escape has been developed by the Iowa Department of Agriculture and Land Stewardship (IDALS), Iowa

BUSINESS ISSUES COMMITTEE

Department of Natural Resources, and Iowa State University for the state of Iowa.

THEREFORE, BE IT RESOLVED, the Iowa Cattlemen's Association supports and encourages voluntary efforts to reduce nutrient escape in order to maintain and improve water quality in the state of Iowa and Gulf of Mexico.

BE IT FURTHER RESOLVED, the Iowa Cattlemen's Association supports funding through the state legislature for cost-share initiatives, educational outreach, water quality projects, and manure management best practices that are available to producers to reduce nutrient escape.

BI-PPLEM-52 Unmanned Aerial Vehicle (UAV) Use 2021

WHEREAS, the public and private use of Unmanned Aerial Vehicles (UAV) in society will continue to intensify; and

WHEREAS, this technology has the capability to infringe upon private property rights.

THEREFORE, BE IT RESOLVED, the Iowa Cattlemen's Association supports the development and integration of UAV technology in our state, provided this technology does not infringe on private property rights.

BI-PPLEM-53 Land & Water Stewardship 2019

WHEREAS, the Iowa Cattlemen's Association supports the protection of private property rights and our state's natural resources through provisions of the Clean Water Act as it was written by Congress and has been interpreted by the Supreme Court.

THEREFORE, BE IT RESOLVED, the Iowa Cattlemen's Association supports working with the Environmental Protection Agency to identify water quality solutions that do not impose burdensome mandates on cattle producers and all of the agricultural community.

BI-PPLEM-54 U.S. Army Corps of Engineers 2020

WHEREAS, the U.S. Army Corps of Engineers continues to promote regulations that alter the normal flow of the Missouri River to create better habitat for wildlife and endangered species; and

WHEREAS, land adjacent to the Missouri River is primarily used for agricultural production; and

WHEREAS, the U.S. Army Corps of Engineers policies have resulted in widespread flooding and decimation of cropland, pasture, and communities along the river.

THEREFORE BE IT RESOLVED, ICA supports amending the U.S. Army Corps of Engineers Master Manual to restore flood prevention and protection of property as the top priorities.

BI-PPLEM-55 Anaerobic Digestion Systems 2020

WHEREAS, manure management and manure valuation in cattle operations

BUSINESS ISSUES COMMITTEE

may present challenges; and

WHEREAS, environmental impacts and regulations relating to cattle operations are becoming increasingly important and sometimes controversial; and

WHEREAS, anaerobic digestion systems and similar technology provide economic and environmental benefits.

THEREFORE, BE IT RESOLVED, the Iowa Cattlemen's Association support the research and development of anaerobic digestion systems and similar technology and encourage the equitable monetization of dairy and beef cattle manure.

BI-PPLEM-56 Waters of the U.S. 2020

WHEREAS, clean water is a state and federal priority; and

WHEREAS, cattle producers should be able to use their land for production to the greatest extent; and

WHEREAS, the 2015 Waters of the U.S. (WOTUS) Rule would have given the federal government authority to regulate water on 97 percent of land in Iowa; and

WHEREAS, the 2020 Navigable Waters Protection Rule defines WOTUS and establishes clear rules for compliance.

THEREFORE, BE IT RESOLVED, the Iowa Cattlemen's Association opposes regulations and/or legislation to expand federal jurisdiction of the Clean Water Act.

BI-PPLEM-57 Hazardous Liquid Pipeline Setback Distance 2023

WHEREAS, producers have a responsibility to protect the health and well-being of our livestock; and

WHEREAS, hazardous liquid pipelines, as defined by the U.S. Department of Transportation Pipeline and Hazardous Materials Safety Administration, are built to contain material, but may be compromised; and

WHEREAS, a hazardous liquid may cause risk for livestock and humans; and

WHEREAS, the U.S. DOT PHMSA has established that no pipeline may be located within 50 feet of any private dwelling, or any industrial building or place of public assembly in which persons work, congregate, or assemble, unless it is provided with at least 12 inches of cover in addition to standards prescribed in 49 CFR § 195.248; and

WHEREAS, neither the Iowa Code nor the Iowa Utilities Board rules have defined setback distance requirements.

THEREFORE, BE IT RESOLVED, the Iowa Cattlemen's Association supports the establishment of a setback distance for hazardous liquid pipelines in Iowa.

BE IT FURTHER RESOLVED, the setback distance for new hazardous liquid pipelines shall be a minimum of 1250 feet, barring scientific evidence proving otherwise, from any residence or location where livestock are housed, kept, located, or grazed.

BE IT FURTHER RESOLVED, individual landowners may voluntarily choose to agree to a hazardous liquid pipeline in closer proximity than the established setback distance.

BUSINESS ISSUES COMMITTEE

BI-PPLEM-58 Eminent Domain **2023**

WHEREAS, in recent years, municipalities have used the 'eminent domain' process to condemn and seize private property for private economic development and resale to the private sector; and

WHEREAS, the U.S. Supreme Court has upheld the ability of government entities to forcibly take private property from a citizen and then convey that seized property to other citizens or private corporations in the name of economic development.

THEREFORE, BE IT RESOLVED, ICA shall support federal and state legislation that prevents government entities from taking private property through the eminent domain process for the purpose of conveying that property to other private individuals or entities.

BE IT FURTHER RESOLVED, ICA shall support legislation to change the appraisal standards for federal and state appraisals to include fair market value based on highest economic value for the compensation for the taking of private property.

BE IT FURTHER RESOLVED, ICA shall vigorously oppose the use of eminent domain for private use.

TAX AND FINANCE

BI-TF-3 Balanced Budget **2022**

BE IT RESOLVED, the Iowa Cattlemen's Association supports the approach to a balanced budget and more fiscal responsibility in state and national government with any burden being placed on all segments of society equally.

BE IT FURTHER RESOLVED, as Iowa moves to be more fiscally responsible with our tax dollars, the Iowa Cattlemen's Association supports exhausting all existing financial resources before passing any tax increases.

BI-TF-7 Job Creation **2019**

WHEREAS, the creation of jobs is a top priority in the State of Iowa; and

WHEREAS, further processing of farm commodities would increase jobs in Iowa.

THEREFORE, BE IT RESOLVED, the Iowa Cattlemen's Association supports further processing of farm products.

BI-TF-9 School & Bond Issues **2023**

WHEREAS, it has been proposed that current Iowa law requiring a 60 percent approval to pass a bond issue be reduced to a simple majority.

THEREFORE, BE IT RESOLVED, the Iowa Cattlemen's Association supports retention of the current 60 percent approval requirement.

BE IT FURTHER RESOLVED, the Iowa Cattlemen's Association supports allowing local school districts, upon a favorable vote, to retire future school bond

BUSINESS ISSUES COMMITTEE

indebtedness using no more than 50 percent property tax revenue.

BI-TF-13 **Property Tax Exemption for 2019** **Pollution Control Systems**

WHEREAS, there is currently a property tax exemption on land holding pollution control systems.

THEREFORE, BE IT RESOLVED, the Iowa Cattlemen's Association should work to retain the existing property tax exemption on pollution control containment systems.

BI-TF-15 **Foot & Mouth Disease Indemnity Fund 2022**

WHEREAS, the federal government has an indemnity fund to pay producers for their livestock in the event of an Foot and Mouth Disease (FMD) outbreak in the U.S.

THEREFORE, BE IT RESOLVED, the income from the FMD indemnity fund should be handled the same as an involuntary conversion and qualify for two-year deferral or replacement.

BI-TF-18 **Road Use Tax Fund 2023**

WHEREAS, the Road Use Tax Fund is constitutionally protected to repair and maintain Iowa's roads and bridges; and

WHEREAS, the Road Use Tax Funds are distributed according to a state mandated formula.

THEREFORE, BE IT RESOLVED, the Iowa Cattlemen's Association opposes any changes to the formula that would jeopardize funding for use on rural Iowa road and bridge infrastructure.

BI-TF-20 **Incentives for Livestock Facilities 2020**

WHEREAS, recent studies completed by various groups and organizations report "the best way to generate economic activity and revitalize rural and small town Iowa is to expand the livestock industry"; and

WHEREAS, studies have shown the greatest financial return to management is through a livestock operation; and

WHEREAS, modern livestock production systems can benefit the environment.

THEREFORE, BE IT RESOLVED, in order to furnish an incentive for modernizing existing livestock facilities and to encourage building new livestock facilities, the Iowa Cattlemen's Association work with the Iowa Legislature, and other states, to create incentives to encourage modernization and construction of improved pollution control, manure management, and livestock production systems.

BI-TF-23 **Unemployment Compensation 2021**

WHEREAS, the quarterly unemployment compensation exemption of \$20,000 is no longer practical in the present inflated economy.

BUSINESS ISSUES COMMITTEE

THEREFORE, BE IT RESOLVED, the quarterly exemption be increased to \$60,000 and hereafter be adjusted by the Consumer Price Index.

BE IT FURTHER RESOLVED, all officers of a family corporation and its family members should be exempt from state and federal unemployment compensation tax.

BI-TF-30 Livestock Production Incentive Refund 2019

WHEREAS, animal agriculture is essential to Iowa's economy.

WHEREAS, taxes on these receipts are not equitably returned to county governments; and

WHEREAS, the beef cow herd provides environmental and economic benefits to the state by adding value to our fragile lands.

THEREFORE, BE IT RESOLVED, the Iowa Cattlemen's Association supports the continuation of the individual livestock incentive refund where the individual receives a payment from the state general fund which reflects the number of cows, bulls and bred heifers in inventory.

BE IT FURTHER RESOLVED, the Iowa Legislature should move toward fully funding the Iowa Production Credit without regard to individual or business structure income or net worth factors.

BI-TF-31 Agricultural Tax Credit 2021

WHEREAS, our present system of property tax in Iowa is not operating fairly and adequately.

THEREFORE, BE IT RESOLVED, the Iowa Cattlemen's Association supports improvements in the productivity formula to initiate county-by-county calculations using productivity values to more accurately reflect actual farming expenses.

BE IT FURTHER RESOLVED, the Iowa Cattlemen's Association favors continuation of the limit on increases in assessed value of agriculture property.

BE IT FURTHER RESOLVED, the Iowa Cattlemen's Association favors continuation of the homestead tax credit and agricultural tax credit full payment each year unless it could be replaced with a fully funded livestock value-added tax credit, or similar legislation which encourages cattle and other livestock production which includes pasture and forage production and protection of the environment.

BE IT FURTHER RESOLVED, the present fixed seven percent capitalization rate be changed to a flexible rate to better reflect the actual situation.

BE IT FURTHER RESOLVED, the Iowa Cattlemen's Association favors continuation of the Family Farm Tax Credit.

BI-TF-32 Social Security Exemption on 2021 Cooperative Dividends

WHEREAS, corporate entities and inactive farmers are not subject to social security tax on income received from participation in the Conservation Reserve Program, but individual active farmers may be subject to the tax, and

WHEREAS, corporate entities which are members of cooperatives are not subject to social security tax on income they receive from earnings distributed to them

BUSINESS ISSUES COMMITTEE

by a cooperative, but individual farmer-members are subject to the tax, and

WHEREAS, it is longstanding federal policy to encourage farmers to participate in the CRP and to band together in cooperatives, particularly now in “valued-added” cooperatives.

THEREFORE, BE IT RESOLVED, that as a matter of fairness to active farmers and to non-corporate farmers, and as a matter of increased effectiveness in achieving widely supported federal farm policy goals, the Iowa Cattlemen’s Association requests Congress grant a complete exemption from social security taxes on income received by farmers from participation in the Conservation Reserve Program and on income received from earnings distributed to them by cooperatives.

BE IT FURTHER RESOLVED, the Iowa Cattlemen’s Association work for an equitable solution to the social security tax on earnings distributed by cooperatives.

BI-TF-33 Property Tax Levies 2020

WHEREAS, county property tax levies are rising in part due to exemption of some private property from taxation; and

WHEREAS, exempt lands still require roads, fire and police protection; and

WHEREAS, exempt lands are generally assessed at relatively low valuations such that the tax that would be collected would unlikely cause undue economic hardship on the owners.

THEREFORE, BE IT RESOLVED, the Iowa Cattlemen’s Association supports legislation that would alter the property tax exemption on Woodland Reserve, Wetlands Reserve, Native Prairie and Iowa Slough Bill lands, such that a more equitable treatment of these lands with respect to Iowa’s cattle industry be achieved.

BI-TF-34 Federal Estate Tax 2022

WHEREAS, the family farm is and should continue to be the backbone of agriculture in Iowa; and

WHEREAS, a family livestock operation cannot attain economic success without a substantial land base for growing feed grains; and

WHEREAS, amendments to the estate tax laws have not kept pace with inflation.

THEREFORE, BE IT RESOLVED, the Iowa Cattlemen’s Association:

1. Support, first and foremost, full and permanent repeal of the Estate Tax,
2. Oppose any proposal to increase the gift or estate tax liability of farmers and ranchers,
3. Oppose any proposal to repeal the stepped-up basis provisions not tied to repeal of the estate tax, and
4. Support passage of estate and gift tax legislation which will eliminate or significantly reduce the burden of estate and gift taxes on family farms, ranches, and small businesses.

BE IT FURTHER RESOLVED, in absence of a full and permanent repeal, any potential exemption level should be indexed to inflation going forward.

BUSINESS ISSUES COMMITTEE

BI-TF-35 Gift Exemption

2023

WHEREAS, it has become increasingly difficult to own and operate a small business or family farm in this country; and

WHEREAS, the transfer of ownership of these vital businesses has been restricted for years.

THEREFORE, BE IT RESOLVED, the Iowa Cattlemen's Association supports and encourages the National Cattlemen's Beef Association to support raising the annual gift exemption and once raised, that the increase be indexed to inflation for the future.

BI-TF-36 Renewable Fuels & Co-Products

2020

WHEREAS, the production of renewable fuels and their co-products in the state of Iowa is beneficial to the Iowa cattle industry.

THEREFORE, BE IT RESOLVED, the Iowa Cattlemen's Association supports renewable fuels production and legislation that promotes growth in renewable energy and supports initiatives which maximize access to co-products for Iowa's cattle industry.

BE IT FURTHER RESOLVED, the Iowa Cattlemen's Association supports inclusion of beef cattle manure in California's Low Carbon Fuel Standard as a way to provide equitable treatment of all manure sources in this renewable fuel program.

BI-TF-37 Capital Gains

2023

WHEREAS, the average age of farmers and landowners is increasing and most livestock is raised by younger farmers; and

WHEREAS, a reduction in capital gains taxes on farmland and livestock would enhance the transfer of these assets thereby increasing livestock numbers.

THEREFORE, BE IT RESOLVED, the Iowa Cattlemen's Association supports the reduction of federal and state capital gains taxes on farmland and livestock.

BI-TF-38 Fuel Taxes & Pickup License Fees

2023

WHEREAS, the Iowa State Legislature is looking for ways to improve Iowa transportation infrastructure; and

WHEREAS, the Iowa Cattlemen's Association recognizes that rural Iowa road infrastructure is in need of repair and maintenance; and

WHEREAS, the Iowa Cattlemen's Association recognizes additional resources are necessary to complete such repairs and maintenance.

THEREFORE, BE IT RESOLVED, that the Iowa Cattlemen's Association supports efforts that increase funding for rural road infrastructure and state and county funds collected be used for their intended purpose.

BI-TF-39 Agricultural Property Tax Adjustment

2022

WHEREAS, within the State of Iowa there has developed an unfair disparity in

BUSINESS ISSUES COMMITTEE

the calculation and adjustment process in the establishing of agricultural property assessed values which are the foundation for property taxes.

THEREFORE, BE IT RESOLVED, the Iowa Cattlemen's Association supports value calculations that include the use of the property in the formula and assesses all agriculture property on a uniform and equitable level playing field across the State of Iowa.

BI-TF-40 **Support for Section 179 Depreciation** **2020**

WHEREAS, large capital expenditures are necessary and normal for cattle producers; and

WHEREAS, these large expenditures have significant tax implications; and
WHEREAS, Section 179 allows for an expedited depreciation schedule.

THEREFORE, BE IT RESOLVED, the Iowa Cattlemen's Association supports the permanent implementation of Section 179 deduction.

THEREFORE, BE IT FURTHER RESOLVED, the Iowa Cattlemen's Association supports the coupling of the federal and state section 179 tax.

BI-TF-41 **State of Emergency & Essential Workers** **2021**

WHEREAS, health and disaster emergencies significantly impact our way of life, as experienced in 2020 during the COVID-19 pandemic; and

WHEREAS, it's evident that specific industries, to include food and agriculture, must continue to operate during natural disasters, pandemics, or other crises in order to provide life-sustaining services and/or products to the public; and

WHEREAS, the Iowa Cattlemen's Association recognizes the vital roles of each component within the beef supply chain.

THEREFORE, BE IT RESOLVED, the Iowa Cattlemen's Association supports the "essential" designation of the following businesses: veterinary clinics, feed mills, livestock auction markets, haulers (live cattle, feed, veterinary supplies, or finished beef products), meat processing plants, and retailers, during a state of emergency declared by the Governor of Iowa or the President of the United States.

BE IT FURTHER RESOLVED, the aforementioned "essential" agricultural businesses and meat processing plants must be allowed to conduct business as close to normal as safely possible during a state of emergency in order to maintain continuity within the beef supply chain.

BE IT FURTHER RESOLVED, the Iowa Cattlemen's Association supports efforts to prioritize distribution of necessary vaccines and personal protective equipment (PPE) to food supply workers, to include agricultural and meat processing plant workers, during a state of emergency.

BE IT FURTHER RESOLVED, the Iowa Cattlemen's Association encourages elected officials to proactively advocate for resources aimed to protect the health and well-being of agricultural and meat processing plant workers.

BI-TF-42 **Rural Broadband** **2022**

WHEREAS, high-speed internet access is necessary to assure competitive-

BUSINESS ISSUES COMMITTEE

ness of rural economies and industries; and

WHEREAS, approximately one-third of Iowa's counties are broadband deserts with little to no access to high-speed internet; and

WHEREAS, 35 percent of Iowa households do not meet the 25/3 megabits per second (Mbps) benchmark for broadband speed identified by the Federal Communications Commission (FCC); and

WHEREAS, Iowa ranks 45th in the nation in broadband access and the second-slowest internet speed nationwide; and

WHEREAS, limited internet access may impede cattle producers' ability to engage in comprehensive marketplaces.

THEREFORE, BE IT RESOLVED, the Iowa Cattlemen's Association:

1. Supports funding for rural broadband infrastructure, with special emphasis on fiber-optic networks;
2. Supports initiatives that prioritize unserved and underserved areas by meeting or exceeding the FCC's minimum of 25 Mbps for download and 3 Mbps for upload; and
3. Supports state and federal actions which reduce regulatory burdens to achieving broadband access.

CATTLE PRODUCTION COMMITTEE

TABLE OF CONTENTS

CATTLE HEALTH & WELL-BEING

CP-CHWB-D-6	Iowa Livestock Health Advisory Council (ILHAC) Priorities.....	44
CP-CHWB-2	Brucellosis Vaccination	44
CP-CHWB-7	Iowa Livestock Health Advisory Council.....	44
CP-CHWB-9	Ultrasound, Bovine Fetal Aging, Carcass Measurement and Embryo Transfer Technicians.....	44
CP-CHWB-11	Humane Animal Practices.....	45
CP-CHWB-16	Iowa Beef Center	46
CP-CHWB-18	Foreign Animal Disease Response.....	46
CP-CHWB-19	Feed & Water Availability at Sale or Collection Facilities	46
CP-CHWB-21	Ionophore Classification.....	47
CP-CHWB-24	Nationwide Cattle Identification.....	47
CP-CHWB-26	Trichomoniasis Testing.....	48
CP-CHWB-27	Foreign Animal Disease Preparedness.....	49
CP-CHWB-28	Clearance of Drug Technologies.....	49
CP-CHWB-30	Preconditioned Cattle Sales.....	49
CP-CHWB-31	Judicious Antimicrobial Use	50
CP-CHWB-32	Green & Gold Tag Preconditioning Programs	51

LIVE CATTLE MARKETING

CP-LCM-D-11	Cattle Contracts Library Pilot Program	51
CP-LCM-D-12	Cattle Market Transparency Research.....	51
CP-LCM-3	Mandatory Reporting.....	52
CP-LCM-6	Seafood, Meat & Poultry Inspection.....	52
CP-LCM-7	Humane Harvest Practices	52
CP-LCM-23	Concentration/Consolidation	53
CP-LCM-30	Abandoned Railroad Right-of-Ways.....	53
CP-LCM-31	Chicago Mercantile Exchange (CME) Futures Contracts	53
CP-LCM-36	Horse Slaughter	54
CP-LCM-37	Value Markets	54
CP-LCM-42	Chicago Mercantile Exchange (CME) Feeder Cattle Index	55
CP-LCM-43	State Funding for Feeder Cattle Price Reporting Program	55
CP-LCM-44	Increasing Price Discovery.....	55
CP-LCM-45	Standards of Delivery.....	56
CP-LCM-46	CME Live Cattle & Feeder Cattle Futures Contracts Price Limits	56
CP-LCM-47	Dealer Statutory Trust	56
CP-LCM-48	Transparency of Formula Transactions.....	57
CP-LCM-49	Adjusting Reporting Regions.....	57
CP-LCM-50	Next Day Cattle Weights	57
CP-LCM-51	Delivery at Packing Plants	57
CP-LCM-52	CFTC Resources	58

SCIENCE AND TECHNOLOGY

CP-ST-3	Beef Quality Assurance (BQA).....	58
CP-ST-6	Iowa State University Beef Research & Extension	58

CP-ST-8 Iowa State University Extension.....59
CP-ST-11 Environmental Management Education59
CP-ST-21 Iowa State University Facilities59
CP-ST-28 Iowa State University Veterinary Diagnostic Lab Funding60
CP-ST-30 Co-Product in Livestock Diets.....60
CP-ST-31 Iowa State University Agriculture
Experiment Station Funding.....60
CP-ST-32 Beef Quality Assurance Auditing.....60

CATTLE PRODUCTION COMMITTEE

CATTLE HEALTH & WELL-BEING

CP-CHWB-D-6 Iowa Livestock Health Advisory Council 2023 (ILHAC) Priorities

WHEREAS, beef representatives on the Iowa Livestock Health Advisory Council (ILHAC) have requested priorities for bovine research.

THEREFORE, BE IT DIRECTED, the following are research and education priorities: Anaplasmosis, Digital Dermatitis (hairy heel wart), Trichomoniasis, Animal Well-being Issues, BRD/Mycoplasma Bovis, and Cryptosporidiosis.

BE IT FURTHER DIRECTED, the Iowa Cattlemen's Association supports increased funding for ILHAC, which may include the possibility of moving from the education budget to the ag and natural resources budget.

CP-CHWB-2 Brucellosis Vaccination 2019

WHEREAS, brucellosis is an infectious and contagious disease which can cause economic hardship to the Iowa cattle industry; and

WHEREAS, some states bordering Iowa have not achieved brucellosis-free status; and

WHEREAS, the threat of reintroduction into herds continues to exist; and

WHEREAS, loss of Iowa's brucellosis-free status would impede sale of Iowa cattle within and across state lines.

THEREFORE, BE IT RESOLVED, the Iowa Cattlemen's Association supports continued brucellosis calfhood vaccination and accompanying state funding.

CP-CHWB-7 Iowa Livestock Health Advisory Council 2019

WHEREAS, the Iowa Livestock Health Advisory Council (ILHAC) was formed to monitor disease research of food-producing animals at Iowa State University.

WHEREAS, ILHAC funding has remained flat since established in 1977 through 2013.

THEREFORE, BE IT RESOLVED, the Iowa Cattlemen's Association supports increased funding for ILHAC.

BE IT FURTHER RESOLVED, the Iowa Cattlemen's Association supports the current definition of the term livestock utilized in Section 267.1, Subsection 1, Code 1985, and further, that the Iowa Cattlemen's Association supports the current composition of membership of the IHLAC, specifically excluding the canine, equine, ratite, bison, cervids, camels and llamas.

CP-CHWB-9 Ultrasound, Bovine Fetal Aging, Carcass 2020 Measurement & Embryo Transfer Technicians

WHEREAS, the beef cow-calf and registered seedstock industry segments are an important and significant part of Iowa's cattle industry and economy; and

WHEREAS, there is a current and projected shortage of livestock veterinarians available to specialize in providing ultrasound, bovine fetal aging, carcass-trait measurement, and embryo transfer services to the cattle industry; and

WHEREAS, expectations and competition for veterinarian and technician ser-

CATTLE PRODUCTION COMMITTEE

vices continue to rise from all animal owners and limit most veterinarians' ability to specialize and therefore become more accurate with bovine ultrasound; and

WHEREAS, there is a projected need for more qualified, competent, and experienced ultrasound technicians or veterinarians to meet the increasing cattle industry demand for these affordable, cost-saving, and value-adding services, within a time-sensitive period in Iowa.

THEREFORE, BE IT RESOLVED, the Iowa Cattlemen's Association Ultrasound Task Force continue their efforts to reach an agreement providing for a practical solution to this issue with the Iowa Board of Veterinary Medicine and Iowa Veterinary Medical Association (IVMA) that will allow certified, competent technicians and veterinarians to offer ultrasound services in Iowa, including those required for fetal aging, carcass measurement, and embryo transfer.

BE IT FURTHER RESOLVED, the Iowa Cattlemen's Association work with the Iowa Board of Veterinary Medicine, IVMA, ISU Dept. of Animal Science, ISU Veterinary College, and the Iowa Department of Agriculture and Land Stewardship (IDALS) to develop a reasonable and effective Iowa Reproductive Ultrasound Training and Certification Course for technicians and veterinarians to validate skill and accuracy levels of all those individuals providing ultrasounds services to cattlemen, for a fee.

BE IT FURTHER RESOLVED, the Iowa Cattlemen's Association fully and completely supports the continuance of ultrasound fetal aging, carcass trait measurement, and embryo transfer by certified, competent, and experienced technicians and veterinarians, within the previously established Iowa regulations for the use of prescription-only drugs.

BE IT FURTHER RESOLVED, if any proposed regulation changes for any Iowa rules pertaining to bovine ultrasound use and embryo transfer, fail to allow the legal offering of these services, for a fee, by qualified, certified, competent, and experienced technicians, then the Iowa Cattlemen's Association will initiate legislation to allow these services by competent, certified technicians as a legal Iowa service business and seek the support of other farm and livestock groups with similar policy.

CP-CHWB-11 Humane Animal Practices 2021

WHEREAS, the members of the Iowa Cattlemen's Association make the health and well-being of their livestock the number one priority.

THEREFORE, BE IT RESOLVED, the Iowa Cattlemen's Association should pursue opportunities to educate the citizens of Iowa regarding the humane practices which Iowa cattlemen use to ensure the welfare, safety, and good health of their cattle.

BE IT FURTHER RESOLVED, the Iowa Cattlemen's Association supports individual cattlemen who observe animals in need of assistance and/or contact individuals or organization to provide such assistance.

BE IT FURTHER RESOLVED, if, for any reason, an Iowa farmer finds he is unable to provide adequate care for his cattle, the Iowa Cattlemen's Association should assist in providing for the sale or harvest of said cattle.

BE IT FURTHER RESOLVED, the Iowa Cattlemen's Association encourages prosecution of individuals or organizations that trespass or gain employment in

CATTLE PRODUCTION COMMITTEE

animal production operations to collect information to use in a negative manner.

CP-CHWB-16 Iowa Beef Center 2021

WHEREAS, the Iowa Legislature provides funds for the Iowa Beef Center; and
WHEREAS, Iowa beef producers have approved a state checkoff that expands
producer funding to include production education and research;

THEREFORE, BE IT RESOLVED, the Iowa Beef Center has the support of the
Iowa Cattlemen's Association in its effort to help improve the beef industry in the
state of Iowa.

BE IT FURTHER RESOLVED, the Iowa Cattlemen's Association supports in-
creased appropriations for the Iowa Beef Center.

BE IT FURTHER RESOLVED, the Iowa Cattlemen's Association encourage
the Iowa Beef Industry Council to prioritize producer education funding of the Iowa
Beef Center through the use of state checkoff funds they administer.

BE IT FURTHER RESOLVED, the Iowa Cattlemen's Association fully utilize
the Iowa Beef Center to direct effective educational programming to Iowa cattlemen
to increase management and adoption of technology that will improve producer
profitability.

BE IT FURTHER RESOLVED, that collaborative systems be established to
identify producer needs for educational topics among Iowa State University de-
partments that contribute to the mission of the Iowa Beef Center, Iowa Cattlemen's
Association and Iowa Beef Industry Council.

CP-CHWB-18 Foreign Animal Disease Response 2022

WHEREAS, bioterrorism and agro-terrorism could result in a devastating prob-
lem for the livestock industry in Iowa through diseases such as Foot and Mouth
Disease and others.

THEREFORE, BE IT RESOLVED, the Iowa Cattlemen's Association fully sup-
ports and encourages state agencies and involved institutions to maintain an ag-
gressive and coordinated response.

BE IT FURTHER RESOLVED, the Iowa Cattlemen's Association encourage
the coordination of the development of comprehensive federal, state and local
emergency response plans, including the role of the Federal Emergency Manage-
ment Agency and state counterparts.

BE IT FURTHER RESOLVED, the Iowa Cattlemen's Association supports ad-
ditional funding at the state level for animal disease preparedness.

BE IT FURTHER RESOLVED, the Iowa Cattlemen's Association supports the
work of the Center for Food Security and Public Health and the Secure Beef Supply
Plan to further prepare the United States and Iowa for an animal disease outbreak.

CP-CHWB-19 Feed & Water Availability at Sale or 2021 Collection Facilities

WHEREAS, cattlemen are dedicated to the production of high-value, healthy
livestock; and

WHEREAS, cattle may be held at sale or collection facilities for a period of time

CATTLE PRODUCTION COMMITTEE

without access to feed and clean drinking water, prior to sale and/or transport; and
WHEREAS, withholding access to drinking water may causes economic losses for producers and health challenges in cattle; and

WHEREAS, the health and well-being of livestock is a high priority for all stakeholders within the beef cattle industry, and

WHEREAS, the Livestock Marketing Association (LMA) has included provisions related to feed and water availability in their Guide to Animal Handling; and

WHEREAS, the Beef Quality Assurance (BQA) program Cattle Care & Handling Guidelines also recommends avoiding feed and water interruption longer than 24 hours.

THEREFORE, BE IT RESOLVED, the Iowa Cattlemen's Association supports readily available feed and water for livestock housed for more than 24 hours and as conditions require.

BE IT FURTHER RESOLVED, the Iowa Cattlemen's Association supports industry research through university resources and the LMA to further identify both challenges and solutions related to feed and water availability that are research-driven and practical.

BE IT FURTHER RESOLVED, the Iowa Cattlemen's Association shall commit to meeting with representatives from Iowa State University and the LMA to discuss future adjustments to feed and water availability standards.

CP-CHWB-21 Ionophore Classification 2019

WHEREAS, polyether ionophores (monensin, lasalocid, and laidlomycin) do not function as therapeutic or sub-therapeutic antibiotics when fed to cattle, are not used as therapeutic agents in human medicine, and are not a concern for antibiotic resistance in humans or cattle, and

WHEREAS, some beef marketing claims focus on animal production without use of antibiotics and such claims jeopardize the use of polyether ionophores, and

WHEREAS, United States producers are placed at a competitive disadvantage to producers in the European Union and Australia due to different reporting and regulatory requirements for ionophores,

THEREFORE BE IT RESOLVED, the Iowa Cattlemen's Association should utilize all avenues to maintain beef cattle producers' ability to utilize polyether ionophores and develop strategies with input from all stakeholders.

BE IT FURTHER RESOLVED, the Iowa Cattlemen's Association should work to educate consumers, retailers, policy makers, and other interested parties that polyether ionophores are not considered to be medically important to humans.

BE IT FURTHER RESOLVED, the Iowa Cattlemen's Association supports separate reporting by the Food and Drug Administration and other agencies of polyether ionophores and other antimicrobials not medically important to humans from those that are medically important to humans.

CP-CHWB-24 Nationwide Cattle Identification 2019

WHEREAS, intrastate and interstate animal ID plans are being developed for the purpose of establishing a means to ensure animal disease traceability, and

WHEREAS, a goal should be to enable the cattle industry and state/federal

CATTLE PRODUCTION COMMITTEE

animal health officials to respond rapidly and effectively to animal health emergencies, and

WHEREAS, the industry is placing renewed emphasis on preventing the introduction of foreign animal diseases of concern, and

WHEREAS, the proposed United States Department of Agriculture (USDA) Animal and Plant Health Inspection Service animal disease traceability framework does not eliminate the need for continued brand inspection programs, and

WHEREAS, having a system to quickly and effectively address disease outbreaks protects animal health and provides confidence for consumers both domestically and internationally, and

WHEREAS, most major beef-exporting countries have implemented animal ID and traceability systems and are using their systems to differentiate themselves from the United States (U.S.) with customers in global markets, and

WHEREAS, the World Organization for Animal Health (OIE) has adopted guidelines on animal ID and traceability that establish basic principles which any traceability system should satisfy, and

WHEREAS, the 2016-2020 cattle industry Long Range Plan emphasizes the cattle industry should secure the broad adoption of individual animal ID disease traceability system(s) to equip the industry to effectively manage a disease outbreak while enhancing both domestic and global trust in U.S. beef.

THEREFORE BE IT RESOLVED, an effective animal disease traceability program should:

1. Be compatible with private sector animal ID and verification programs backed by the USDA.
2. Be compatible with the general traceability principles of the OIE.
3. Recognize existing USDA programs for beef exports.
4. Be built using infrastructure that supports other potential uses of ID.
5. Utilize low cost electronic official tagging devices paid for by federal and/or state funds, when possible.
6. Require that cattle ID information for disease traceability be kept confidential and strongly protected from disclosure.
7. Protect ownership information from disclosure to future owners.
8. Protect producers from liability for acts of others, after the cattle have left the producer's control.
9. Operate at the speed of commerce.
10. Not replace or impede existing state brand inspection activities.
11. Work within a framework to accommodate all classes of cattle.

CP-CHWB-26 Trichomoniasis Testing 2023

WHEREAS, Trichomoniasis is a devastating disease for cow/calf operators upon which there is currently no treatment post-diagnosis; and

WHEREAS, the disease has been detected in an increasing number of lowa herds across the state; and

WHEREAS, other states with significant cow/calf herds have mandated mandatory testing.

THEREFORE, BE IT RESOLVED, that the Iowa Cattlemen's Association supports increased testing for Trichomoniasis.

CATTLE PRODUCTION COMMITTEE

BE IT FURTHER RESOLVED, the Iowa Cattlemen's Association supports efforts to educate and increase awareness about the importance of testing for Trichomoniasis and the impact the disease can have on individual cow herds and on the state's cattle industry as a whole.

CP-CHWB-27 Foreign Animal Disease Preparedness 2022

WHEREAS, U.S. livestock producers face continual threat from common livestock diseases, as well as new threats from exotic foreign animal diseases and

WHEREAS, a foreign animal disease outbreak would devastate the beef cattle industry and

WHEREAS, rapid diagnosis, prompt movement restrictions, implementation of federal, state and local emergency management plans and indemnity programs can often forestall outbreaks of epidemic or quasiepidemic proportions and

WHEREAS, implementation of sound biosecurity measures on livestock operations can be an effective tool in preventing and mitigating livestock disease risks

THEREFORE, BE IT RESOLVED, the Iowa Cattlemen's Association requests that USDA place a high priority on the development of improved and validated FMD vaccines, including funding for production of an adequate supply and surge capabilities of the vaccines

BE IT FURTHER RESOLVED, the Iowa Cattlemen's Association supports mandatory Premise Identification registration with the Iowa Department of Agriculture and Land Stewardship (IDALS) for all livestock facilities, provided that:

1. Information is kept confidential
2. Information is used only for animal health purposes including animal disease surveillance, control, and eradication and indemnification processes

BE IT FURTHER RESOLVED, the Iowa Cattlemen's Association works to educate the cattle industry on appropriate biosecurity practices and encourage producers, livestock haulers, feed companies, etc., to incorporate stronger biosecurity into their management practices

BE IT FURTHER RESOLVED, the Iowa Cattlemen's Association supports the development of rapid, practical diagnostic and surveillance tools for foreign animal diseases.

BE IT FURTHER RESOLVED, the Iowa Cattlemen's Association supports the U.S. CattleTrace.

CP-CHWB-28 Clearance of Drug Technologies 2019

WHEREAS, chlortetracycline and monensin are valuable technologies.

THEREFORE, BE IT RESOLVED, the Iowa Cattlemen's Association encourages co-clearance of chlortetracycline and monensin.

CP-CHWB-30 Preconditioned Cattle Sales 2020

WHEREAS, the Iowa Cattlemen's Association endorses preconditioned feeder calf sales.

THEREFORE, BE IT RESOLVED, the Iowa Cattlemen's Association adopts

CATTLE PRODUCTION COMMITTEE

the following changes in procedure to be recommended for all Iowa Cattlemen's Association endorsed preconditioned cattle sales.

Procedure:

1. All cattle marketed will be accompanied by an official Iowa preconditioning certificate and identified by an official green and/or gold preconditioning ear tag.
2. No trader cattle allowed at sale. All cattle must be in the owner's possession at least 60 days prior to the sale. Further, no cattle shall have been in a market less than 60 days prior to sale.
3. Minimum of 500 head is recommended for a sale with the maximum number determined by auction facilities.
4. Preliminary commitment to sell should be given to the auction coordinator.
5. Contracts will be inspected by members of the Preconditioned Feeder Calf Committee and a veterinarian. Any cattle deemed non-conforming will be sold at end of sale.
6. Calves will be weighed immediately prior to entering sale ring and sold in order determined by sale coordinator. In the case of co-mingled or sorted sales, weighing conditions will be specified prior to sale.
7. Sales will be advertised to indicate approximate number of cattle and will be announced from the block if any optional vaccinations have been given.
8. The offering will be designated as an Iowa Cattlemen's Association endorsed endeavor. All sellers must be members of the Iowa Cattlemen's Association.

BE IT FURTHER RESOLVED, these minimum requirements of preconditioning of 30 days (45 days for gold tag) weaning and bunk adjustment will be mandatory for cattle to be sold at an Iowa Cattlemen's Association endorsed sale.

BE IT FURTHER RESOLVED, the Iowa Cattlemen's Association work with the Iowa Veterinary Medical Association and Iowa Livestock Marketing Association to encourage their members to uphold all aspects of Iowa preconditioned calf sales.

CP-CHWB-31 Judicious Antimicrobial Use 2020

WHEREAS, the use of antimicrobial agents is necessary at times to preserve life and prevent suffering in the face of disease in cattle; and

WHEREAS, indiscriminate use of antimicrobials may select for bacterial resistance; and

WHEREAS, the Iowa Cattlemen's Association recognizes that cattle producers have an obligation to protect animal health; and

WHEREAS, the Iowa Cattlemen's Association further recognizes the obligation to protect human health by promoting food safety.

THEREFORE, BE IT RESOLVED, the Iowa Cattlemen's Association advocate the judicious use of antimicrobials and issues involving the use of antimicrobials in animals and humans, which must be resolved using sound science without influence of emotion or political agendas.

BE IT FURTHER RESOLVED, cattle producers should strive to limit the need

CATTLE PRODUCTION COMMITTEE

for antimicrobial use through sound husbandry and preventative practices.

BE IT FURTHER RESOLVED, the Iowa Cattlemen's Association call for on-going continuing education for both producers and veterinarians in the area of judicious antimicrobial use.

CP-CHWB-32 Green & Gold Tag Preconditioning Programs 2021

WHEREAS, the Iowa Cattlemen's Association and the Iowa Veterinary Medical Association (IVMA) initiated and have continually updated Iowa's preconditioning programs since its inception; and

WHEREAS, the Green and Gold Tag Preconditioning Programs have encouraged the use of research-driven, best practices preconditioning protocol; including but not limited to vaccine protocol and weaning periods; and

WHEREAS, the Green and Gold Tag Preconditioning Programs were designed to increase animal health and performance as well as bolster economic value and financial return to cattle producers.

THEREFORE, BE IT RESOLVED, the Iowa Cattlemen's Association shall establish a task force comprised of producers and representatives from allied industry partners, to include the Livestock Marketing Association (LMA) and IVMA.

BE IT FURTHER RESOLVED, the task force will meet on a biannual basis with the purpose of making recommendations to improve the Green and Gold Tag Preconditioning Programs.

BE IT FURTHER RESOLVED, ICA, LMA and IVMA shall publish the Green and Gold Tag Preconditioning Program Guidelines and Protocols on their websites and other media to inform cattle producers.

LIVE CATTLE MARKETING

CP-LCM-D-11 Cattle Contracts Library Pilot Program 2023

WHEREAS, a Cattle Contracts Library Pilot Program has been developed by USDA AMS and will be released to the public in January 2023;

WHEREAS, the Iowa Cattlemen's Association has lobbied for transparency of formula transactions which encouraged the development of this resource.

THEREFORE, BE IT DIRECTED, the Iowa Cattlemen's Association shall advocate for the establishment of a working group comprised of representatives from NCBA affiliates in major cattle feeding regions to assess the efficacy of the Cattle Contracts Library Pilot Program.

BE IT FURTHER DIRECTED, the Iowa Cattlemen's Association shall actively participate in the working group.

CP-LCM-D-12 Cattle Market Transparency Research 2023

WHEREAS, members of the NCBA Market Information, Transparency, and Reporting Working Group invested significant time to explore six specific issues related to cattle market transparency; and

CATTLE PRODUCTION COMMITTEE

WHEREAS, recommendations were released in January 2022 but members may be unaware of the working group's findings.

BE IT DIRECTED, the Iowa Cattlemen's Association shall request a detailed report to members from the NCBA regarding the 2022 Market Information, Transparency, and Reporting Working Group recommendations to the Live Cattle Marketing Committee.

CP-LCM-3 Mandatory Reporting **2020**

WHEREAS, the Iowa Cattlemen's Association has always supported a competitive, free and open market system; and

WHEREAS, Mandatory Price Reporting (MPR) is a valuable tool to allow participants in the beef industry to view historical price and volume data; and

WHEREAS, the negotiated transaction reported by MPR are used by some to price and formulate the value of cattle; and

WHEREAS, at times there are daily reports that have volumes that are too small to represent true price discovery;

THEREFORE, BE IT RESOLVED, the Iowa Cattlemen's Association work to eliminate all daily fed cattle reports and compile all price and volume data into weekly reports

BE IT FURTHER RESOLVED, that the release of the weekly fed cattle reports be delayed at least one week.

BE IT FURTHER RESOLVED, the Iowa Cattlemen's Association supports all national and regional negotiated trade reports for price and volume be broken into categories of 0-14 and 15-30 day delivery periods.

CP-LCM-6 Seafood, Meat & Poultry Inspection **2021**

WHEREAS, the federal meat inspection program was mandated by Congress for the safety of the public; and

WHEREAS, there is a need to have consistent inspection and labeling of all meat products; and

THEREFORE, BE IT RESOLVED, the Iowa Cattlemen's Association encourages the National Cattlemen's Beef Association and other commodity organizations to initiate legislation to have fish, seafood, and shellfish, including imports, subject to the same types of inspection as are included in the Meat Inspection and Poultry Inspection Acts.

BE IT FURTHER RESOLVED, all meat inspection and labeling programs should be under the authority and jurisdiction of the U.S. Department of Agriculture.

CP-LCM-7 Humane Harvest Practices **2021**

WHEREAS, Iowa cattlemen are active proponents of animal care and well-being, and

WHEREAS, the humane harvest of all animals entering the food chain is important to all consumers; and

WHEREAS, the Humane Slaughter Act provides for accepted practices and

CATTLE PRODUCTION COMMITTEE

guidelines for live animal harvesting and disposal.

THEREFORE, BE IT RESOLVED, the Iowa Cattlemen's Association encourages the National Cattlemen's Beef Association to monitor and support the humane harvest of all livestock.

CP-LCM-23 Concentration/Consolidation 2022

WHEREAS, the Iowa cattlemen are very concerned about pending and future mergers, acquisitions and consolidation of agri-businesses; and

WHEREAS, beef packers currently are as concentrated as at any time in history; and

WHEREAS, a competitive market structure is needed to promote price discovery in the fed cattle market.

THEREFORE, BE IT RESOLVED, the Iowa Cattlemen's Association and the National Cattlemen's Beef Association demand the federal government more closely monitor mergers and acquisitions in the packing, processing and retailing industries because of increased potential for anti-trust violations.

BE IT FURTHER RESOLVED, the Packers & Stockyards Administration be requested to continue to closely monitor price movements and sector margins to assure that price changes are the result of market signals and not the exercise of market power. U.S. Department of Agriculture and U.S. Department of Justice assure that:

1. No merger be allowed that would decrease competition for cattle or other commodity or reduce access; and
2. The fed cattle market is a fair and competitive market place with robust weekly participation by all packers.

CP-LCM-30 Abandoned Railroad Right-of-Ways 2023

WHEREAS, Iowa agriculture is dependent on rail transportation, yet railroad companies continue to request that lines be abandoned.

THEREFORE, BE IT RESOLVED, abandoned railroad right-of-ways acquired by lease arrangement or easement is the rightful property of adjoining property owners. The Iowa Cattlemen's Association favors giving adjoining property owners the first option to purchase said right-of-way.

BE IT FURTHER RESOLVED, the Iowa Cattlemen's Association favors enactment of legislation to require that any public agencies, individuals, or organizations which do take title to abandoned railroad right-of-way be responsible for maintaining fences, drainage systems, crossings and weed and brush controls of any such acquired railroad right-of-way.

CP-LCM-31 Chicago Mercantile Exchange (CME) 2021 Futures Contracts

WHEREAS, fed cattle futures provide an important risk management tool for Iowa cattlemen; and

WHEREAS, cattle feeding in Iowa continues to enjoy a resurgence because of ethanol co-products and feed availability; and

CATTLE PRODUCTION COMMITTEE

WHEREAS, the CME continues to unnecessarily discount deliveries of live beef cattle from Iowa/Minnesota/South Dakota at \$1.50/cwt during October contract months; and

WHEREAS, the CME standards for deliverable weights are between 1,050 lbs. and 1,600 lbs. for steers and between 1,050 lbs. and 1,350 lbs. for heifers.

THEREFORE, BE IT RESOLVED,:

1. Iowa Cattlemen's Association opposes any changes by the Chicago Mercantile Exchange (CME) that would adversely affect Iowa cattle feeders' ability to deliver on CME contracts;
2. CME allow heifers to be delivered to meet futures market obligations;
3. CME lower the weight spec on steers to 1500 lbs;
4. CME Increase the choice spec to 70%;
5. CME Increase the yield spec to 63%;
6. CME continue the existence of the Worthing, South Dakota delivery point for CME Live Cattle futures contracts and reject any discounting of cattle delivered to the Worthing, South Dakota delivery point;
7. CME add more delivery points for cattle on the Live Cattle Futures Contract;
8. CME avoid creating a cash settled Live Cattle Futures Contract;
9. CME increase transparency, level access to information, and transactions, and foster an environment that builds confidence in the ability to use the Live Cattle Futures Contract;
10. NCBA should retain staff and budget resources to investigate and represent cattle industry issues to the CME;
11. Iowa Cattlemen's Association work with NCBA to further explore a long demand option;
12. Iowa Cattlemen's Association work with NCBA to further explore dynamic contract specifications for settlement including weight; and
13. CME should require that short delivery occur as early as possible upon expiration of the contract.

CP-LCM-36 Horse Slaughter 2021

WHEREAS, the method of euthanasia employed by processing facilities that harvest horses is a humane procedure; and

WHEREAS, there is a continued need for the humane harvest of horses to prevent the inhumane treatment of horses that would suffer from neglect and abandonment; and

WHEREAS, the cattle industry depends upon an economically healthy horse industry and systems to offer a humane end of life for unwanted horses.

THEREFORE, BE IT RESOLVED, Iowa Cattlemen's Association supports the right of horse owners to ethically and humanely dispose of horses, and oppose legislation that could potentially hinder future efforts to dispose of horses.

CP-LCM-37 Value Markets 2023

WHEREAS, producers in Iowa have taken advantage of value-based programs; and

WHEREAS, value-based programs allow all producers to capture more value

CATTLE PRODUCTION COMMITTEE

for their cattle.

THEREFORE, BE IT RESOLVED, the Iowa Cattlemen's Association strongly encourages a complete and competitive value-based marketing program consisting of, but not limited to, total seedstock evaluation, individual carcass data collection with industry pass through, age and source verification, development and promotion of new and existing beef programs.

CP-LCM-42 Chicago Mercantile Exchange (CME) 2021 Feeder Cattle Index

WHEREAS, the Chicago Mercantile Exchange (CME) feeder cattle contract is often used as vehicle to aid in price discovery of the cash feeder cattle market, and;

WHEREAS, the CME feeder cattle contract is a cash settled contract, and;

WHEREAS, the cash feeder cattle market index acts as an objective target for the CME feeder cattle contract to settle to, and;

WHEREAS, the current index composition lists a number of exclusions based upon body and/or flesh condition in addition to breed type, and;

WHEREAS, Iowa Cattlemen feels the index may not be fully representative of the cash market.

THEREFORE, BE IT RESOLVED, the Iowa Cattlemen's Association encourages the U.S. Department of Agriculture to eliminate all exclusions due to condition and include all cash sales of feeder cattle which are predominately of beef breeding in the calculations to determine the feeder cattle index.

BE IF FURTHER RESOLVED, Iowa supports using statistical analysis to exclude market outliers and reduce index volatility.

CP-LCM-43 State Funding for Feeder Cattle Price 2021 Reporting Program

WHEREAS, Iowa Cattlemen members in numerous segments of the industry find the information provided through U.S. Department of Agriculture's Iowa feeder cattle price reporting program to be a valuable decision making tool; and

WHEREAS, price and volume data published through the program is essential to the calculation of the "cash index price" which is used for cash settlement of the Chicago Mercantile Exchange Feeder Cattle futures contract; and

WHEREAS, the federal and private funding that is allowing the program to continue operating was intended to be temporary financial support to allow the program to operate until state funding is restored.

THEREFORE, BE IT RESOLVED, the Iowa Cattlemen's Association shall continue to support state funding for the feeder cattle price reporting program.

CP-LCM-44 Increasing Price Discovery 2023

WHEREAS, the Iowa cattlemen who sell their cattle on the open market rely on competitive price discovery to get a fair price for their cattle; and

WHEREAS, most independent Iowa cattlemen wish to avoid vertical integration that is evident in the pork and poultry sectors; and

WHEREAS, the popularity of packer formula pricing based on the weighted average limits negotiations on the open market; and

CATTLE PRODUCTION COMMITTEE

WHEREAS the recommended amount of cash negotiated trade varies by region across the United States.

BE IT FURTHER RESOLVED, the Iowa Cattlemen's Association work with its membership, as well as other cattle industry stakeholders, to require packers that slaughter an average of no less than five percent of fed cattle nationally to purchase no less than the average percentage of negotiated trade for the past two years within a covered reporting region at the plant level.

BE IT FURTHER RESOLVED, cattle sold via negotiated means shall be delivered within 14 days.

BE IT FURTHER RESOLVED, Iowa Cattlemen's Association and NCBA encourage members to utilize voluntary price reporting of fed cattle prices.

CP-LCM-45 Standards of Delivery 2022

WHEREAS, currently producers are forced by buyers to hold purchased cattle for three or more weeks; and

WHEREAS, the packer is using purchased cash negotiated cattle as captive supply.

THEREFORE, BE IT RESOLVED, Iowa producers should not agree to cash negotiated cattle sales further than two trading weeks out.

BE IT FURTHER RESOLVED, if cattle are held past the agreed two weeks, the buyer will pay a fee of \$3 or more per head per day.

CP-LCM-46 CME Live Cattle & Feeder Cattle 2023 Futures Contracts Price Limits

WHEREAS, the current daily price limit for Live Cattle is \$5.75 and Feeder Cattle is \$7.00; and

WHEREAS, the current rules allow for daily limits to expand to \$8.50 on Live Cattle and \$10.50 on Feeder Cattle on the next day following a limit's close; and

WHEREAS, the current limits and expanded limits have on most occasions allowed the market to function and trade on the second day; and

WHEREAS, the CME has the ability to temporarily expand daily price limits in times of extreme market conditions; and

WHEREAS, wide limits increase volatility and margin requirements while potentially discouraging market participants.

THEREFORE, BE IT RESOLVED, the Iowa Cattlemen's Association opposes any increase to daily price limits to Live Cattle and Feeder Cattle.

CP-LCM-47 Dealer Statutory Trust 2020

WHEREAS, during the past 10 years, there have been dozens of livestock dealer defaults that cost creditors, including producers, auction markets, and other dealers, hundreds of millions of dollars; and

WHEREAS, when such defaults occur, producers who have recently sold livestock are often not paid for the sale of their animals; and

WHEREAS, a seller's protection is often limited to a bond, which has historically compensated unpaid sellers less than fifteen cents for every dollar in losses; and

CATTLE PRODUCTION COMMITTEE

WHEREAS, the Livestock Marketing Association has sponsored legislation creating a Dealer Statutory Trust, similar to the existing Packer Statutory Trust.

THEREFORE BE IT RESOLVED, the Iowa Cattlemen's Association supports federal legislation creating a Dealer Statutory Trust that gives unpaid cash sellers first priority in livestock and the proceeds or accounts receivable from the sale of such livestock prior to other creditors.

BE IT FURTHER RESOLVED, a buyer in the ordinary course of business purchasing from a dealer will continue to take clear title of livestock.

CP-LCM-48 Transparency of Formula Transactions 2020

WHEREAS formula transactions have increased in recent years; and

WHEREAS the details of formula transactions, including the base price and any premiums applied, are not reflected in Livestock Mandatory Reporting.

THEREFORE BE IT RESOLVED, ICA supports amending the confidentiality guidelines for Livestock Mandatory Reporting.

THEREFORE BE IT FURTHER RESOLVED, ICA supports increased transparency in formula transactions and changing LMR to publicly report the details of the transactions including the net price, base price, and any premiums.

CP-LCM-49 Adjusting Reporting Regions 2020

WHEREAS current confidentiality rules in Livestock Mandatory Reporting prevent market transparency; and

WHEREAS adjusting reporting regions would increase the quantity of reported fed cattle sales.

THEREFORE BE IT RESOLVED, ICA supports adding South Dakota and Illinois to create an IA/MN/SD/IL regional market.

BE IT FURTHER RESOLVED, ICA supports combining Colorado and Wyoming for price reporting.

CP-LCM-50 Next Day Cattle Weights 2020

WHEREAS, Livestock Mandatory Reporting requires reporting of carcass weights; and

WHEREAS, average carcass weights are not reported publicly until 13 days later; and

WHEREAS, slaughter data provides valuable information to cattle producers.

THEREFORE BE IT RESOLVED, ICA supports an 11:00 a.m. daily LMR report providing the average carcass weight of cattle harvested the previous day.

CP-LCM-51 Delivery at Packing Plants 2020

WHEREAS, animal welfare at all stages of production is a critical consideration for Iowa cattle producers; and

WHEREAS, Iowa cattle producers depend on timely delivery of cattle to packing plants to maximize animal welfare, especially in times of extreme weather con-

CATTLE PRODUCTION COMMITTEE

ditions; and

WHEREAS, time spent waiting to unload cattle at a packing plant significantly impacts shrink and ultimate value of cattle sold.

THEREFORE BE IT FURTHER RESOLVED, Iowa Cattlemen's Association encourages packing plants to implement delivery systems that minimize wait times and accept cattle in a timely manner.

CP-LCM-52 CFTC Resources 2021

WHEREAS, the Commodity Futures Trading Commission (CFTC) provides important regulatory oversight and enforcement of agricultural futures and options contract specifications and regulations; and

WHEREAS, the CFTC lacks sufficient resources (i.e. computer hardware/ software and staff) to provide complete surveillance and oversight of electronically traded contracts.

THEREFORE, BE IT RESOLVED, the Iowa Cattlemen's Association and National Cattlemen's Beef Association work to secure adequate funding for these CFTC needs and activities through Congressional authorization and appropriations as soon as possible.

SCIENCE & TECHNOLOGY

CP-ST-3 Beef Quality Assurance (BQA) 2020

WHEREAS, consumer acceptance of beef and beef products depends on consumer confidence in the safety and wholesomeness of beef products; and

WHEREAS, consumer confidence depends on the knowledge that producers are following all guidelines for proper management techniques.

THEREFORE, BE IT RESOLVED, the Iowa Cattlemen's Association supports the recommendations of the Beef Quality Assurance (BQA) Committee and Programs in their continuing efforts to educate producers as to proper management techniques to assure continued production of safe and wholesome beef products.

BE IT FURTHER RESOLVED, the Iowa Cattlemen's Association urges its members to adopt the proper BQA practices to assure consumers that beef is a safe product.

BE IT FURTHER RESOLVED, the Iowa Cattlemen's Association encourages meat processors to utilize the BQA program as a foundation for developing animal welfare audit and evaluation programs.

CP-ST-6 Iowa State University Beef Research 2020 & Extension

WHEREAS, the Iowa cattle industry generates 6.3 billion in farm receipts annually; and

WHEREAS, virtually all Iowa cattle farms are family owned and operated (98%); and

WHEREAS, climate and soil conditions are integral in developing and evaluating crop and cattle production systems; and

CATTLE PRODUCTION COMMITTEE

WHEREAS, Iowa is a diverse agricultural state and needs to maintain scientific research in the industry.

THEREFORE, BE IT RESOLVED, the Iowa Cattlemen's Association strongly encourages Iowa State University to support the beef cattle research and extension program at Iowa State University.

BE IT FURTHER RESOLVED, Iowa State University shall maintain a network of outlying research farms to conduct applied research that reflects soil and climate conditions across the state.

BE IT FURTHER RESOLVED, the Iowa Beef Center at Iowa State University continue to be responsible for extension education and delivery of research-based information for Iowa cattle producers.

CP-ST-8 Iowa State University Extension 2022

WHEREAS, agriculture is a highly technical business and the largest industry in Iowa; and

WHEREAS, technology is constantly developing and changing; and

WHEREAS, Iowa State University Extension Service plays an important role in the adoption of developing technology from an unbiased position.

THEREFORE, BE IT RESOLVED, the Iowa Cattlemen's Association supports the continuation of the Iowa State University Extension Specialists to disseminate the adopted technology on a timely basis.

BE IT FURTHER RESOLVED, the Iowa Cattlemen's Association urges that agriculture be given the highest priority possible in applied research and education efforts of Iowa State University.

CP-ST-11 Environmental Management Education 2020

WHEREAS, cattlemen need access to current environmental regulations and compliance requirements that are critical to alleviating pressures and concerns of special interest groups; and

WHEREAS, action of the Attorney General's office to prosecute violators under the criminal rather than civil section of the Iowa Code places these producers in jeopardy.

THEREFORE, BE IT RESOLVED, the Iowa Cattlemen's Association continue to inform cattlemen on the regulations, resources and technology available to environmentally manage their cattle operations.

CP-ST-21 Iowa State University Facilities 2022

WHEREAS, facility quality is critical to continued animal science and veterinary medicine activities at Iowa State University (ISU); and

WHEREAS, a recent external peer review by the accreditation committee of the American Association of the Veterinary Laboratory Diagnosticians identified potentially serious concerns related to biosafety, biocontainment and adequacy of the amount of space to meet current and future need in diagnostic medicine at the Iowa State University Veterinary Diagnostic Laboratory; and

CATTLE PRODUCTION COMMITTEE

WHEREAS, a professional needs assessment and program planning study for the Veterinary Diagnostic Laboratory concluded a new \$100 million is needed.

THEREFORE, BE IT RESOLVED, the Iowa Cattlemen's Association strongly encourages the Governor of Iowa, Iowa Legislature and Board of Regents to give adequate funding to maintain and improve the Animal Science and Veterinary Medicine facilities at ISU.

BE IT FURTHER RESOLVED, the Iowa Cattlemen's Association strongly encourages the Governor of Iowa, Iowa Legislature and Board of Regents to fund the expansion of the Iowa State University Veterinary Diagnostic Laboratory.

CP-ST-28 Iowa State University Veterinary 2022 Diagnostic Lab Funding

WHEREAS, the Iowa State University College of Veterinary Medicine is one of the crucial links in evaluating and controlling livestock diseases in Iowa and education of food supply veterinarians.

THEREFORE, BE IT RESOLVED, the Iowa Cattlemen's Association supports increased funding for the Iowa State University Veterinary Diagnostic Lab.

CP-ST-30 Co-Product in Livestock Diets 2019

WHEREAS, the cattle industry is an important segment of the Iowa economy; and

WHEREAS, the ethanol industry provides an abundant feed co-product for the cattle industry; and

WHEREAS, additional research is needed to improve utilization, safety, impact on product quality and rapid test technology on feed characteristics of co-product for the cattle industry.

THEREFORE, BE IT RESOLVED, the Iowa Cattlemen's Association supports the continued research funding for utilizing co-products in the cattle industry.

CP-ST-31 Iowa State University Agriculture 2019 Experiment Station Funding

WHEREAS, animal agriculture is important to Iowa's economy; and

WHEREAS, the development and adoption of technologies are necessary for Iowa's beef industry to stay competitive; and

WHEREAS, increased budgets for Iowa State University (ISU) Ag Experiment Station and ISU Extension are necessary to accomplish research necessary to improve the beef industry; and

THEREFORE, BE IT RESOLVED, the Iowa Cattlemen's Association work aggressively with the Iowa Legislature to increase funding for animal agriculture research for the ISU Experiment Station and ISU Extension.

CP-ST-32 Beef Quality Assurance Auditing 2019

WHEREAS, the industry is moving towards third party audited systems that potentially could have varying audit points; and

WHEREAS, beef producers are expected to keep written records for the audit

IOWA LEGISLATOR LIST

An Iowa legislator is someone who has many roles -- lawmaker, a representative of constituents' interests, and an overseer of state citizen interests.

Their job is defined as:

Lawmaking

- Proposing, studying, discussing and voting on legislation
- Appropriating money to state agencies and programs
- Creating, eliminating and modifying Iowa laws and programs

Representing

- Serving constituents living in each district
- Functioning as a liaison between citizens and Iowa government

Evaluating

- Overseeing the work of departments and agencies funded by the Legislature
- Ensuring that laws are being carried out according to legislative intent
- Confirming the Governor's appointments and responding to vetoes

Find your state senator or representative

Visit: <https://www.legis.iowa.gov/legislators/find>

2023 U.S. Senate

SEN. CHARLES GRASSLEY

<https://grassley.senate.gov>

DC Office

135 Hart Senate Office Building
Washington, DC 20510

Phone: 202.224.3744

Fax: 202.224.6020

Iowa Offices

Cedar Rapids..... 319.363.6832
Council Bluffs..... 712.322.7103
Davenport..... 563.322.4331
Des Moines..... 515.288.1145
Sioux City 712.233.1860
Waterloo 319.232.6657

SEN. JONI ERNST

<https://ernst.senate.gov>

DC Office

730 Hart Senate Office Building
Washington, DC 20510

Phone: 202.224.3254

Fax:..... 202.224.9369

Iowa Offices

Cedar Rapids..... 319.365.4504
Council Bluffs..... 712.352.1167
Davenport..... 563.322.0677
Des Moines..... 515.284.4574
Sioux City 712.252.1550

IOWA LEGISLATOR LIST

2023 U.S. House of Representatives

DISTRICT 1
REPRESENTATIVE
MARIANNETTE MILLER-MEEKS
<https://millermeeks.house.gov>

DC Office
 1034 Longworth House Office Building
 Washington, DC 20515
 Phone: 202.225.6576

Iowa Offices
 Davenport 563.232.0930
 Ottumwa 641.244.7020

DISTRICT 2
REPRESENTATIVE ASHLEY HINSON
<https://hinson.house.gov>

DC Office
 1717 Longworth House Office Building
 Washington, DC 20515
 Phone: 202.225.2911

Iowa Offices
 Cedar Rapids 319.364.2288
 Dubuque 563.557.7789
 Waterloo 319.266.6925

DISTRICT 3
REPRESENTATIVE ZACH NUNN
<https://nunn.house.gov/>

DC Office
 1232 Longworth House Office Building
 Washington, DC 20515
 Phone: 202.225.5476

Iowa Offices
 Des Moines 515.400.8180

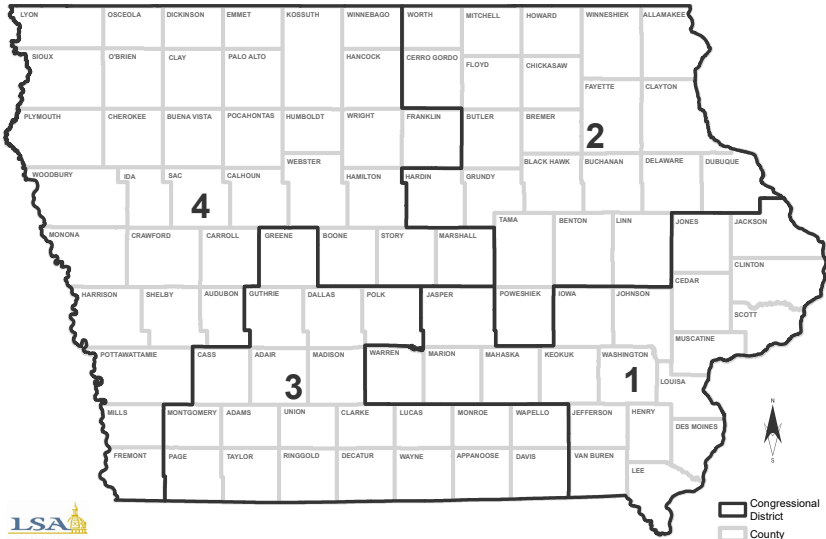
DISTRICT 4
REPRESENTATIVE RANDY FEENSTRA
<https://feenstra.house.gov>

DC Office
 1440 Longworth House Office Building
 Washington, DC 20515
 Phone: 202.225.4426

Iowa Offices
 Council Bluffs 712.256.5653
 Fort Dodge 515.302.7060
 Sioux City 712.224.4692

IOWA CONGRESSIONAL DISTRICTS

Effective Beginning with the Elections in 2022 for the 118th U. S. Congress



Prepared by the Iowa Legislative Services Agency

