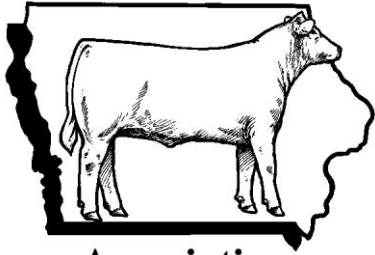


Iowa Cattlemen's



Association

Reporting a Manure Discharge

ICA Fact Sheet

May 2013

Manure spills are often costly for livestock producers and can be detrimental to the environment. According to Iowa law, any manure release should be reported to the Iowa Department of Natural Resources (IDNR). Knowing how to properly handle a manure discharge due to a chronic wet period can keep your operation in compliance with the IDNR and protect environmental quality.

Assess the Scope of the Spill

There are several questions to ask when determining the severity of a discharge or potential for one to occur. Assessing the following points will aid in preventing the spill from having damaging effects:

- When did the spill occur?
- How did the spill occur?
- In what direction did the discharge flow?
- Did the discharge have an opportunity to reach a waterway or stream?
- What is the average flow of the discharge or total volume?

Prevent Spill Movement – The 4 C's

Control – Stopping the source of the discharge should be the first step in your response. Adding soil to the berm walls, adding transfer pipes, stopping additional water flow, etc. If an engineer developed your manure holding structure, contact them for assistance.

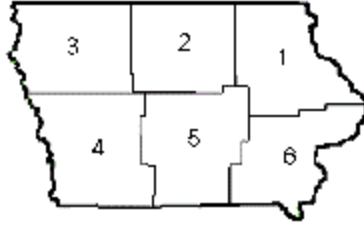
Contain – If at all possible, prevent the discharge from reaching a waterway or stream by building trenches, dams, covering tile inlets, and pumping the discharge to another location.

Call – Contact the IDNR through their 24Hr Emergency Response Spill Reporting Hotline at 515.281.8694. Report the spill to the local sheriff if public safety is a concern.

Close – When possible utilize proper application rates to empty lagoons and maximize storage capacity. Also assess containment structure integrity.

Reporting as a Permitted Operation

- To stay in compliance with NPDES permit regulations, all livestock waste discharges must be reported to the IDNR at the regional level.
 - *The true value to having an NPDES permit is the allowance of a discharge during excessive rainfall.*
- The Livestock Waste Discharge Notification (Form 9) can be found on IMMAG's website at: <http://www.agronext.iastate.edu/immag/ppr.html>.
 - Offers specific details of the spill.
 - Should be included in facility records.
- Contact the IDNR prior to the spill, if not shortly after it occurs. *The sooner the better!* A listing of the field offices is on the next page, or go to the [DNR website to find your field office](#).



[Field Office #1, Manchester](#) - Northeast, Iowa
909 West Main Suite #4
Manchester, IA 52057
Phone: (563) 927-2640

[Field Office #2, Mason City](#) - North Central, Iowa
2300 15th Street SW
Mason City, IA 50401
Phone: (641) 424-4073

[Field Office #3, Spencer](#) - Northwest, Iowa
1900 North Grand Ave, Suite E17
Spencer, IA 51301
Phone: (712) 262-4177

[Field Office #4, Atlantic](#) - Southwest, Iowa
1401 Sunnyside Lane
Atlantic, IA 50022
Phone: (712) 243-1934

[Field Office #5, Des Moines](#) - South Central, Iowa
7900 Hickman Rd. Suite 200
Windsor Heights, IA 50324
Phone: (515) 725-0268

[Field Office #6, Washington](#) - Southeast, Iowa
1023 West Madison Street
Washington, Iowa 52353-1623
Phone: (319) 653-2135