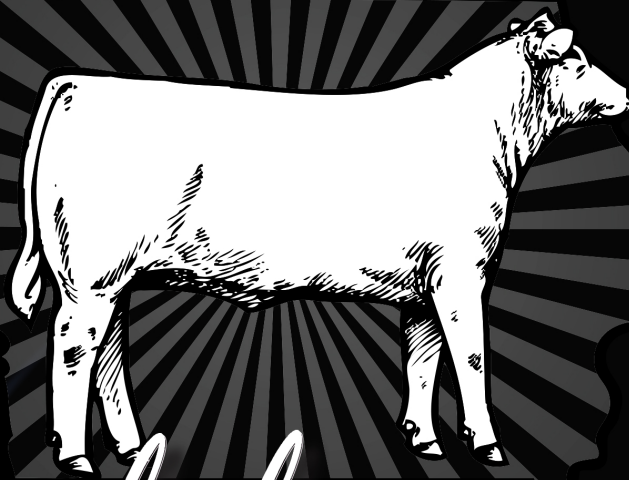


★ ★ ★ ★ ★  
**IOWA CATTLEMEN'S  
ASSOCIATION**



*Symbol of*  
**EXCELLENCE**  
**PERFORMANCE BULL SALE**

*40th Anniversary*

**MONDAY, APRIL 7, 2025**

**WCC COW PALACE - ANITA, IOWA**

**6:30 P.M.**

# Welcome

For 40 years, the Iowa Cattlemen's Association (ICA) has provided third-party verified performance bulls through our 'Symbol of Excellence' Performance Bull Sales. Annually, we invite seedstock producers from across Iowa and beyond, to test their best genetics against one another. In the end, bulls that make the consignment sale at Anita must express their potential to sire calves that will tip the scales at weaning and excel on the rail.

With that said, ICA takes pride in offering the best cattle to producers in our great state and others across the country. We hope you can take comfort in knowing that we have started the selection process for you at our sales, as we offer 'Excellence' in this year's consignment sale. In addition to being registered with a breed association, ICA's 'Symbol of Excellence' bulls must surpass the muster of the following qualifications during and after the commercial grow yard testing period.

- Minimum 1,100-pound adjusted yearling weight.
- Minimum 11.5-square inch ultrasound yearling ribeye area measurement.
- Must pass a breeding soundness exam with a minimum 32-centimeter scrotal circumference measurement.
- Must rank in the upper 90% of all bulls indexed.

Yes, comparative analysis is tangible and easy to point out in development facilities. However, we strive to balance performance data during the testing windows with even more important bull potency and longevity economic factors. After all, purchasing bulls is an investment, and at the end of the day, if that investment is not expressed through a higher-performing calf crop, then how good of an investment have you made?

The group of bulls being offered at the Anita 'Symbol of Excellence' sale were required to have a minimum 2.5 pounds per day on test. More importantly, these bulls are ready for the roughest of terrains for the spring/summer breeding seasons—both structurally and reproductively.

Each individual has been put through one of the most meticulous performance testing programs in the country. These bulls have been or will be selected to participate in these sales on structure and reproductive soundness, and have had to excel in all performance categories. Your purchase will be backed by data and will help to ensure that your next calf crop will rattle the scales at weaning and/or perform in the feedyard and on the rail for increased profitability.

If you have received this catalog in advance of the sale, videos of each bull are available on the ICA website ([www.iacattlemen.org](http://www.iacattlemen.org)). There will also be an online auction option. Details will be available on the Bull Evaluation Program page on the ICA website.

Thank you for your continued support, trust, and belief in the consignor group and your Iowa Cattlemen's Association!

Sincerely,

*Cody Jimmerson*

Iowa Cattlemen's Association



# Sale Information

**Sale Location:**

WCC Cow Palace - 55169 730th St., Anita, IA 52339

**Sale Representatives:**

Iowa Cattlemen's Association, Cody Jimmerson..... (515) 971-3127  
Iowa Cattlemen's Association, Bryan Whaley..... (515) 689-4929  
American Cattleman, Austin Sorensen..... (712) 310-3788  
Midwest Marketer, Austin Brandt..... (712) 621-1829  
WCC Cow Palace, Chance Will..... (712) 249-6865  
LiveAuctions.TV, Mariah Miller..... (712) 294-4731

**Auctioneer:** Jared Miller - (515) 608-0953

**Sale Day Information:**

Bids may be accepted by sale representatives.  
Sale Day Phone (515) 971-3127 or (515) 689-4929  
*A final sale order and supplement sheet will be available on sale day.*

**Sale Terms:**

All cattle sold at the ICA 'Symbol of Excellence' sales in Anita will sell under the terms of their respective breed associations.

**Testing Facility Information:**

Please make arrangements with the following individuals to view cattle prior to delivery to WCC Cow Palace  
Werner's Feed Efficiency, Joe Werner - (641) 344-4926

**Sale Information Website:**

To view the online catalog and videos visit: <https://bit.ly/3wvWoPc>

**At Anita**

**13 Angus Spring Yearlings**  
**11 Simmental Spring Yearlings**  
**2 Gelbvieh Spring Yearlings**

**Sale Videos:**

To view consignment videos visit: <https://bit.ly/4kjD5gp>

**Livestock Insurance:**

Available through our Jeanne Conover following your purchase of sale consignments. Liberty Mutual - Jeanne Conover (515) 491-1335

**Internet Bidding:** <https://bit.ly/4gUH8wH>

**EPD Profiles:**

Catalog EPD profiles were generated on Feb. 20, 2025.

**Purchase Delivery:**

Iowa Cattlemen's Association will assist in providing reliable and affordable trucking following purchases of cattle.

*Dinner will be available.*

## Consignors

**SPENCER'S GROVE FARMS**

Larry Bridgewater  
4717 Spencers Grove Rd.  
Walker, IA 52352  
319-560-9378  
Lbridg1457@windstream.net

**BRANDT FARMS**

Kirk Brandt  
2561 Mulberry Ave.  
Corning, IA 50841  
712-621-3605  
brandtfarms86@gmail.com

**KOO'S KATTLE KOMPANY**

Kenny & Renee Grimm  
1431 120th St.  
Audubon, IA 50025  
712-830-1089  
koozkattle@gmail.com

**WALTER FAMILY STOCK FARM**

Gary & Jeremy Walter  
2571 410th Ave.  
Farragut, IA 51639  
Jeremy - 712-246-8957  
jlwalter\_3@hotmail.com

**NOELCK FARMS CATTLE CO.**

Isaiah Noelck  
1418 170th St.  
Hampton, IA 50441  
641-425-6051  
isaiah.noelck@gmail.com

**LEADERS ANGUS**

Stanley Leaders  
27514 340th St.  
Minden, IA 51553  
402-679-8748  
leadersangus@yahoo.com

**SCHAEFER ANGUS**

Craig Schaefer  
7524 Independence Ave.  
Waterloo, IA 50703  
319-215-2708  
schaeferangus@gmail.com

**WOLFE SIMMENTALS**

Bill & Jane Wolfe  
13908 50th Ave.  
Prole, IA 50229  
515-681-5699  
bjwolfe@myomnitel.com

**DLH ANGUS**

D. Lynn Henry  
15009 140th Ave.  
Indianola, IA 50125  
515-974-7156  
lynn@dlhgrafx.com

**JACOBSON ANGUS**

Phil Jacobson  
2024 Armstrong Ave.  
Galva, IA 51020  
712-229-2720  
ptjake79@gmail.com

**TRIPP E LLC**

David Edge & Tannor Gould  
2038 160th St.  
Fort Dodge, IA 50501  
David - 515-332-2834  
Tannor - 515-368-3102  
tannorgould@icloud.com

## *Symbol of Excellence Sale Order*

<b>TAG</b>	<b>BREED</b>	<b>PRICE</b>	<b>DESCRIPTION</b>
116	Angus		High Indexing Overall and Angus
121	Angus		
120	Angus		
111	Angus		
114	Angus		
115	Angus		
141	5/8 Simmental		High Indexing Simmental
137	PB Simmental		
140	1/2 Simmental		
132	1/2 Simmental		
113	Angus		
118	Angus		
136	PB Simmental		
135	3/4 Simmental		
133	3/4 Simmental		
134	5/8 Simmental		
101	Angus		
122	Angus		
110	Angus		
106	Angus		
139	PB Simmental		
108	Angus		
138	PB Simmental		
128	5/8 Gelbvieh		
142	PB Simmental		
129	5/8 Gelbvieh		



## Phenotypic Feed Efficiency Understanding Data Outputs

Production efficiency is one goal in the selection and development of livestock; however, there are two underlying philosophies from which one may define “efficient” and direct future outcomes.

The first is *maintenance* efficiency. This is of primary importance in those cow herds where an efficient cow is considered one that can subsist on low inputs and yet provide a respectable calf each year. The second is *production* efficiency which generally is applied to feedlot cattle where the goal is minimal pounds of feed and maximum edible pounds of output. These two efficiencies may not be the same because low maintenance cows might tend to be easy fleshing and earlier maturing while the feedlot efficient counterparts may be larger, leaner and faster growing.

Feed efficiency is defined in many ways including the newer terms of RFI (residual feed intake) and R-ADG (residual average daily gain.) A discussion of these methods follows descriptions of the simpler efficiency evaluations.

Ranking on Phenotypic Residual Average Daily Gain													
Fed 5/18/2010 through 7/27/2010 70 days													
12 Rib													
RADG Rank	Ear Tag	Start Wt.	End Wt.	ADG	R-ADG <sup>4</sup>	Fat Cover	DMI	Adj. DMI <sup>5</sup>	RFI <sup>3</sup>	RFI Rank	Raw F:G <sup>1</sup>	Adj. F:G <sup>2</sup>	
1	HA403	800	969	2.42	0.86	0.41	19.1	-1.7	-1.79	2.00	7.91	8.39	
2	HA08	942	1136	2.76	0.23	0.50	20.9	0.4	-1.07	3.00	7.57	7.34	
3	HAJ73	984	1187	2.89	0.16	0.62	24.8	0.3	2.46	8.00	8.56	8.10	
4	HA15	920	1118	2.83	0.00	0.41	23.3	0.7	1.41	6.00	8.23	8.07	
5	HA6432	816	923	1.53	-0.03	0.44	21.9	1.1	1.65	7.00	14.37	15.36	
6	HA35	982	1161	2.55	-0.13	0.51	19.8	0.8	-2.20	1.00	7.77	7.40	
7	HA85	1058	1181	1.75	-0.46	0.80	21.4	-0.8	-0.39	4.00	12.22	11.33	
8	HA04	746	807	0.86	-0.63	0.19	19.2	-0.9	-0.07	5.00	22.43	25.51	

**Feed Conversion<sup>1</sup>** (F:G) = pounds of feed (on a 100% dry matter basis) required for one pound of live weight gain  
(*Feed Dry Matter / Weight Gain.*)

Generally this measure is used in commercial feedyards to indicate efficiency. This value makes no adjustment for diet energy content or age/weight differences in measured animals. It's simply raw pounds of feed required per raw pounds of weight retained. Because of this, it is proper to use this type of measure only with cattle of similar age on the same ration. A lower value is desired.

**Feed Efficiency** (G:F) = pounds of live weight gain observed per unit of feed dry matter consumed. This is the reciprocal of “Feed Conversion” and has the same issues. These terms often are used interchangeably and allow users to arrive at the same conclusion. A higher value is desired.

**Adjusted Feed Conversion<sup>2</sup>** This value is the base Feed:Gain value multiplied by the contemporary group's metabolic weight divided by the individual's metabolic weight. The formula is as follows:

$$(Group\ Avg\ Wt.^{75} / Individual\ Wt.^{75}) \times Individual's\ Feed\ to\ Gain.$$

Note that this adjustment attempts to remove the age or size differences of the animal when put on test. This currently is the standard of feed conversion efficiency used by the Beef Improvement Federation. A lower value is desired.

**RFI<sup>3</sup> (Residual Feed Intake):** This is defined as the difference between actual feed intake and that predicted on the basis of the animal's gain and maintenance requirements for its body weight. The calculation is more complex because mathematical statistics are used to determine the RFI value. A prediction equation is developed by using regression of the actual feed intakes, gains and average weights on test of the animal's contemporaries. The calculation factors in both maintenance efficiency (the easy keeper concept) and production efficiency (pounds in vs. pounds out like the normal Feed:Gain equation).

An average animal would have an RFI of “0”. Animals with a negative RFI value are favored because they have consumed less feed for their weight and gain than

the average of their herd mates. Animals with a positive RFI number would be consuming more feed for their weight and gain than the average of their herd mates.



**Measurement of individual intake**

For the RFI calculation to be relevant in the evaluation of potential breeding stock, it's of utmost importance that it be calculated in the context of the weaning contemporary group and used in index selection (multi-trait selection.)

This is important because the pre-weaning environment, pasture management, creep feed availability and age of dam (milking ability as seen between first calf heifers and older cows) has been shown to have a marked effect on the feed conversion outcomes in Iowa State

University trials. This issue is not seen in the same light by all because it appears that many centralized test stations tend to create a "feeding contemporary group" and evaluate cattle in that context. For this reason test stations try to equalize pre-test environments by having a 3-to-5 week warm-up period.

**R-ADG<sup>4</sup> (Residual Average Daily Gain):** This is defined as the difference between actual weight gain and the gain predicted on the basis of dry matter intake, maintenance of body weight and fat cover. Like RFI, a regression equation is developed using the actual gains, feed intakes, average weights on test and fat cover of an animal's herd mates. This unique equation is then used to calculate the individual R-ADG.

An average animal has an R-ADG of "0." Animals with a positive R-ADG value are favored because they have higher daily gains for the amount of feed consumed and their body composition (% fat.) Animals with a negative R-ADG value are unfavorable because they have lower daily gains for the amount of feed consumed and their body composition. Again like RFI, relevance of this evaluation depends on a comparison of animals from the same weaning contemporary group or put through a substantial warm-up period prior to their feed intake and gain test.

**Adj. DMI<sup>5</sup> (Adjusted Dry Matter Intake):** This is defined as the feed dry matter intake adjusted by multiplying the contemporary group's average mid-point metabolic weight, and then dividing by the individual's mid-point metabolic weight. The final value is the difference by subtracting out the contemporary group average. A lower value is desired.

## Comparison of feed efficiency terms

Method	More Desirable	Less Desirable	Difference
<b>Raw F:G – Raw Feed Conversion:</b> usually on dry matter basis (lbs feed/lb of gain)	Lower values Example: 4.5 lbs	Higher values Example 7.5 lbs	Example: 3.0 lbs of feed
<b>Adj. F:G – Adjusted Feed Conversion:</b> usually on dry matter basis (lbs feed/lb of gain)	Lower values Example: 4.5 lbs	Higher values Example: 6.5 lbs	Example: 2 lbs of dry matter
<b>RFI – Residual Feed Intake:</b> usually on dry matter basis	Negative values Example: -1.7	Positive values Example: +1.5	Example: 3.2 lbs of feed
<b>R-ADG – Residual Average Daily Gain:</b> usually on lbs gained per day	Positive values Example: +0.86	Negative values Example: --.63	Example: 1.49 lbs of average daily gain
<b>Adj. DMI – Adjusted Dry Matter Intake:</b> should be on dry matter basis	Negative values Example: -0.9	Positive values Example: +0.8	Example: 1.7 lbs of feed

**File: Animal Science 11**

Prepared by Garland Dahlke, Daryl Strohhahn and Sherry Hoyer, Iowa Beef Center, Iowa State University.

**IOWA STATE UNIVERSITY**  
University Extension

... and justice for all

The U.S. Department of Agriculture (USDA) prohibits discrimination in all its programs and activities on the basis of race, color, national origin, gender, religion, age, disability, political beliefs, sexual orientation, and marital or family status. (Not all prohibited bases apply to all programs.) Many materials can be made available in alternative formats for ADA clients. To file a complaint of discrimination, write USDA, Office of Civil Rights, Room 326-W, Whitten Building, 14th and Independence Avenue, SW, Washington, DC 20250-9410 or call 202-720-5964. Issued in furtherance of Cooperative Extension work, Acts of May 8 and June 30, 1914, in cooperation with the U.S. Department of Agriculture. Gerald A. Miller, interim director, Cooperative Extension Service, Iowa State University of Science and Technology, Ames, Iowa.

# FEED EFFICIENCY

Ear Tag	Feed Cost per Pound of Gain (\$0.153/lb. DM)	Cost of Gain x 600 lbs.	Cost of Gain Rank	RADG	RADG Rank	RFI	RFI Rank	12/5/22 Start Wt.	3/9/23 End Wt.	ADG	DMI	Raw F:G	Adj. F:G
116	\$0.426	\$255.88	1	0.98	2	-4.96	1	1186	1723	5.42	25.6	4.72	3.81
111	\$0.446	\$267.73	2	1.11	1	-2.07	7	783	1364	5.87	24.3	4.14	3.98
132	\$0.460	\$276.09	3	0.57	7	-4.34	2	816	1291	4.80	19.7	4.10	4.11
108	\$0.469	\$281.40	4	0.73	3	-3.75	3	600	1061	4.66	16.8	3.61	4.19
140	\$0.494	\$296.37	5	0.55	8	-1.53	9	901	1421	5.26	24.9	4.73	4.41
101	\$0.501	\$300.65	6	0.59	6	-1.20	10	744	1262	5.23	23.0	4.39	4.47
121	\$0.503	\$301.87	7	0.68	4	1.99	27	906	1508	6.09	30.6	5.04	4.49
113	\$0.504	\$302.66	8	0.29	11	-2.21	6	873	1358	4.90	22.9	4.67	4.50
137	\$0.519	\$311.59	9	0.66	5	-1.20	11	774	1267	4.98	22.7	4.56	4.64
120	\$0.534	\$320.18	10	0.39	9	0.96	23	927	1459	5.38	28.0	5.21	4.76
141	\$0.542	\$324.94	11	0.33	10	0.55	18	937	1449	5.17	27.2	5.26	4.84
109	\$0.547	\$328.48	12	0.16	12	-2.44	4	647	1059	4.16	17.5	4.20	4.89
122	\$0.560	\$336.00	13	-0.13	16	-1.08	12	878	1327	4.54	23.1	5.09	5.00
114	\$0.579	\$347.58	14	0.10	14	1.51	25	916	1407	4.96	27.3	5.50	5.17
134	\$0.581	\$348.60	15	0.12	13	0.58	19	728	1198	4.75	23.2	4.89	5.19
135	\$0.585	\$351.22	16	-0.15	17	0.91	22	903	1374	4.76	26.0	5.46	5.23
128	\$0.601	\$360.79	17	-0.31	20	-2.30	5	804	1177	3.77	18.8	5.00	5.37
136	\$0.602	\$361.18	18	0.05	15	1.31	24	793	1259	4.71	24.8	5.26	5.37
106	\$0.609	\$365.44	19	-0.34	21	0.28	17	984	1417	4.37	25.4	5.82	5.44
115	\$0.611	\$366.77	20	-0.37	23	1.60	26	952	1412	4.65	27.1	5.82	5.46
129	\$0.622	\$373.38	21	-0.48	24	-1.80	8	865	1236	3.75	20.1	5.37	5.56
142	\$0.626	\$375.68	22	-0.20	18	-0.46	15	802	1202	4.04	21.4	5.29	5.59
131	\$0.670	\$402.02	23	-0.72	27	-0.68	14	735	1093	3.62	19.1	5.27	5.98
110	\$0.683	\$409.86	24	-0.35	22	0.90	20	651	1038	3.91	20.2	5.17	6.10
138	\$0.687	\$411.97	25	-0.29	19	0.91	21	765	1150	3.89	21.8	5.61	6.13
118	\$0.687	\$411.99	26	-0.61	26	3.10	28	932	1359	4.31	27.4	6.36	6.13
130	\$0.741	\$444.85	27	-0.91	29	-0.19	16	875	1202	3.30	20.7	6.26	6.62
104	\$0.743	\$445.54	28	-0.99	30	-0.89	13	940	1253	3.17	20.5	6.47	6.63
133	\$0.762	\$456.91	29	-0.83	28	8.74	30	876	1349	4.78	33.5	7.01	6.80
139	\$0.797	\$478.35	30	-0.60	25	7.78	29	726	1172	4.51	29.8	6.61	7.12
Avg.	\$0.590	\$353.87	15.5	0.00	16	0.00	16	840	1295	4.59	23.8	5.23	5.27
Min.	\$0.426	\$255.88	1	-0.99	1	-4.96	1	600	1038	3.17	16.8	3.61	3.81
Max.	\$0.797	\$478.35	30	1.11	30	8.74	30	1186	1723	6.09	33.5	7.01	7.12

## Yearling Angus Bulls

**101**

### L B TOTAL IMPACT 411

Birth Date: 2/29/2024 Bull 21057850 Tattoo: 411  
Spencer's Grove Farms • Larry Bridgewater

*Sire* L B TOTAL IMPACT 146  
LB HARMONY 404

ANGUS GS  
Powered by Wageningen Genes

*Dam* G C EVENING STAR 539  
G C EVENING STAR 053

ACT BW	205 ADJ
80	702
Off Test Wt 205 RATIO	
1262	98
ADG	ADG RATIO
5.23	113
WDA	WDA RATIO
3.47	78
REA ADJ	FAT
12.3	0.43
IMF	ADJ YW
3.34	1265
IMF ADJ	SCROTAL
-0.94	39

CED	BW	WW	YW	CW	MARB	BF	REA
1	3.3	61	119	58	0.5	0.004	0.56
\$F	\$G	\$B	\$M	\$EN	\$C	\$W	
100	45	145	50	-27	238	51	

A grandson of Total Impact 388 is this lot's genetics. A good Total Impact who has shown itself to be a good herd bull for your existing cow herd. He carries a good frame to produce 1,400 lb. fats. He ranks high in the top of the breed for traits in MILK, MH & CLAW which will give you good daughters from him for your replacement herd. His 99 day ADG was 5.23.

**106**

### NF UPSHOT 2418

Birth Date: 2/7/2024 Bull 21054750 Tattoo: 2418  
Noelck Farms • Isaiah Noelck

*Sire* WAA UPSHOT  
M J W MISS MALLORY

ANGUS GS  
Powered by Wageningen Genes

*Dam* ELEC BESSIE ADD 33B  
SHEAR BESSIE ADD 33B

ACT BW	205 ADJ
98	708
Off Test Wt 205 RATIO	
1417	
ADG	ADG RATIO
4.37	94
WDA	WDA RATIO
3.67	82
REA ADJ	FAT
12.1	0.45
IMF	ADJ YW
4.82	1345
IMF ADJ	SCROTAL
0.65	41

CED	BW	WW	YW	CW	MARB	BF	REA
-1	4.4	66	118				
\$F	\$G	\$B	\$M	\$EN	\$C	\$W	
84			57	-18		44	

A very smooth made bull with some extra length, great structure, and plenty of power. This cattleman's bull is built to get out and do his job on any terrain. His half sisters that are in production are awesome mother cows. His sire who is the \$10,000 high-selling bull from the 2012 ICA sale just does not miss, with multiple past sale toppers we couldn't be happier with the calf crop he produces every year. Let this true herd sire prospect make an impact on your herd adding more pounds with the structure and frame to carry it.

*"We are proud to celebrate our 40th anniversary of what is today the Symbol of Excellence bull sales. This is a great opportunity for our industry to showcase proven genetics and to continue to elevate the bar for Iowa cattle producers. For producers, this sale offers peace of mind knowing that the bulls being marketed have been through and meet the requirements of one of the most rigorous performance tests in the state."*

- Cody Jimmerson, ICA SW member services advisor and program coordinator.

**108**

### DLH ASHLAND 012 1807 2418

Birth Date: 3/28/2024 Bull 21023747 Tattoo: 2418  
DLH Angus • D. Lynn Henry

*Sire* DLH ASHLAND 83 012  
DLH JETTIE 2S 83

ANGUS GS  
Powered by Wageningen Genes

*Dam* DLH POWER LASS DM 134 160  
DLH POWER LASS 134 160

ACT BW	205 ADJ
85	531
Off Test Wt 205 RATIO	
1061	89
ADG	ADG RATIO
4.66	101
WDA	WDA RATIO
3.16	71
REA ADJ	FAT
11.5	0.23
IMF	ADJ YW
4.21	1145
IMF ADJ	SCROTAL
-0.01	33

CED	BW	WW	YW	CW	MARB	BF	REA
3	3.8	65	122	53	0.73	-0.061	0.72
\$F	\$G	\$B	\$M	\$EN	\$C	\$W	
102	63	164	49	-36	262	51	

Here is bull calf that started the test as the lightest individual weighed in. He finished with a very strong 4.66 lbs./day. He has a solid set of EPD numbers as well. He is out of our Ashland son that also gained well over 4 lbs./day. His mother had one of the high numbered bull in the 2022 ICA Tama sale.

Online Bidding Available at:

**LiveAuctions.TV**

**110**

### DLH ASHLAND 012 1901 2419

Birth Date: 4/4/2024 Bull 21023750 Tattoo: 2419  
DLH Angus • D. Lynn Henry

*Sire* DLH ASHLAND 83 012  
DLH JETTIE 2S 83

ANGUS GS  
Powered by Wageningen Genes

*Dam* DLH BELLAMY 169 1901  
DLH BELLAMY 92 169

ACT BW	205 ADJ
80	646
Off Test Wt 205 RATIO	
1038	109
ADG	ADG RATIO
3.91	84
WDA	WDA RATIO
3.16	80
REA ADJ	FAT
11.5	0.27
IMF	ADJ YW
3.43	1143
IMF ADJ	SCROTAL
-0.85	34

CED	BW	WW	YW	CW	MARB	BF	REA
6	4.1	93	164	72	0.39	-0.006	0.59
\$F	\$G	\$B	\$M	\$EN	\$C	\$W	
105	41	146	28	-50	217	64	

This calf was born on April 4th and had a rough start on test but he finished strong making the sale. He has possibly the best set of EPDs offered! He is out of our Ashland bull. His mother has a WWR of 105 on four calves and a calving interval of 379 days.



## Yearling Angus Bulls

**111**

### KLB EASY MONEY 4060

Birth Date: 2/11/2024 Bull 21054918 Tattoo: 4060

Brandt Farms • Kirk Brandt

*Sire* GCC MONEY EARNED 852E ET  
DUFF W 373 DIXIEERICA 8137

ANGUSGS  
Powered by Waggon Genetics

*Dam* KLB PROVEN QUEEN 0606  
CVA PROVEN QUEEN 606

ACT BW	205 ADJ
85	736
Off Test WT 205 RATIO	
1364	110
ADG	ADG RATIO
5.87	127
WDA	WDA RATIO
3.57	84
REA ADJ	FAT
12.8	0.45
IMF	ADJ YW
3.97	1327
IMF ADJ	SCROTAL
-0.27	39

CED	BW	WW	YW	CW	MARB	BF	REA
0	4.3	81	141	61	0.38	-0.015	0.72
\$F	\$G	\$B	\$M	\$EN	\$C	\$W	
101	43	144	40	-38	227	56	

An extremely high performing and eye appealing herd sire prospect here. If you are looking to add some punch and frame to your calves without sacrificing looks, then take this bull home with you!



GCC MONEY EARNED 852E ET  
SIRE OF LOT 111

**113**

### LA GURU 1604

Birth Date: 2/29/2024 Bull 21076297 Tattoo: 1064

Leaders Angus • Stanley Leaders

*Sire* LCCC BP GURU 209  
LCCC BP HENRIETTA PRIDE 1600

ANGUSGS  
Powered by Waggon Genetics

*Dam* LA EMULOUS 16D-4  
DAMERON MISS EMULOUS 238

ACT BW	205 ADJ
82	720
Off Test WT 205 RATIO	
1358	
ADG	ADG RATIO
4.9	106
WDA	WDA RATIO
3.73	81
REA ADJ	FAT
14.5	0.5
IMF	ADJ YW
4.84	1362
IMF ADJ	SCROTAL
0.67	39

CED	BW	WW	YW	CW	MARB	BF	REA
8	1	62	106	42	0.62	0.71	0.44
\$F	\$G	\$B	\$M	\$EN	\$C	\$W	
88	45	133	59	-8	232	57	

This bull's sire is a very thick, stylish bull. He puts his stamp on his calves. His sire, EXAR Guru 8719B is a well known sire by Express Angus in Oklahoma. LA Guru 1604 dam is deep, thick and always produces calves that are very sound in structure. She is a front pasture kind.



KENNY ROGERS  
SIRE OF LOT 114

**114**

### LA KENNY RODGERS 48SR1

Birth Date: 2/2/2024 Bull 21079501 Tattoo: 48

Leaders Angus • Stanley Leaders

*Sire* KENNY ROGERS  
FOXHOVENS KINTRY ANNIE 532

ANGUSGS  
Powered by Waggon Genetics

*Dam* LYLESTER FIRST LADY 819  
VINTAGE FIRST LADY 7077

ACT BW	205 ADJ
76	760
Off Test WT 205 RATIO	
1407	
ADG	ADG RATIO
4.96	107
WDA	WDA RATIO
3.6	83
REA ADJ	FAT
15	0.3
IMF	ADJ YW
4.74	1338
IMF ADJ	SCROTAL
0.56	37

CED	BW	WW	YW	CW	MARB	BF	REA
7	0.8	83	144	69	1.01	-0.041	1.46
\$F	\$G	\$B	\$M	\$EN	\$C	\$W	
105	84	189	68	-34	313	83	

This bull is a calving ease bull, out of the highly used Kenny Rogers. High growth, elite levels of marbling and ribeye. Power bull genetics for you to build top 1% RE, top 4% Fat ACC, top 10% \$W, top 10% \$G, top 15% \$B, top 15% \$C and top 25% MARB.

**115**

### LA COVER THE BASES 313-2

Birth Date: 2/10/2024 Bull 21079838 Tattoo: 313

Leaders Angus • Stanley Leaders

*Sire* EXAR COVER THE BASES 0819B  
2 BAR GADVANCE 5134

ANGUSGS  
Powered by Waggon Genetics

*Dam* VAR FOREMAN 3339  
44 BLACKCAP 1752

ACT BW	205 ADJ
83	779
Off Test WT 205 RATIO	
1412	
ADG	ADG RATIO
4.65	100
WDA	WDA RATIO
3.69	100
REA ADJ	FAT
14.2	0.49
IMF	ADJ YW
7.07	1350
IMF ADJ	SCROTAL
3.06	39

CED	BW	WW	YW	CW	MARB	BF	REA
6	2.9	78	135	70	1.75	0.018	1.02
\$F	\$G	\$B	\$M	\$EN	\$C	\$W	
113	109	222	35	-35	323	64	

The sire of this bull is known for his high growth with extremely high carcass numbers that he has passed it on to this son. The kind that will improve your herd genetics in many ways. He is top 2% \$G, top 3% \$B, top 10% \$C, top 2% MARB and top 15% RE.

## Yearling Angus Bulls

**116**

### JA STOCK FUND 4021

Birth Date: 2/7/2024 Bull 21058651 Tattoo: 4021

Jacobson Angus • Phil Jacobson

*Sire* EXAR STOCK FUND 9097B  
DEER VALLEY GROWTH FUND  
EXAR EMPRESS 0875

ANGUSGS  
Powered by MyAngusGenetics

*Dam* JA EDELLA 0218  
JINDRA ACCLAIM

RIVER HILLS EDELLA X218

ACT BW	205 ADJ
92	944
Off Test WT	205 RATIO
1723	126
ADG	ADG RATIO
5.42	117
WDA	WDA RATIO
4.46	85
REA ADJ	FAT
13.3	0.26
IMF	ADJ YW
5.1	1654
IMF ADJ	SCROTAL
0.95	39

CED	BW	WW	YW	CW	MARB	BF	REA
5	2.3	92	164	86	0.79	0.014	0.87
\$F	\$G	\$B	\$M	\$EN	\$C	\$W	
105	62	196	46	-49	300	72	

A powerful, thick and heavy muscled Stock Fund son here that's been a stand-out since birth. Top 5% WW and YW and top 25% in \$W. Dam has an average WWR of 118. If you're looking to add pounds to your calf crop don't miss this one.



EXAR STOCK FUND 9097B  
SIRE OF LOT 116

**118**

### JIMM MAJOR 412M

Birth Date: 3/5/2024 Bull 21083443 Tattoo: 412M

Koo's Kattle Kompany • Kenny & Renee Grimm

*Sire* RL JUSTICE  
KG JUSTIFIED 3023  
RL CASH LADY 8988

ANGUSGS  
Powered by MyAngusGenetics

*Dam* GVC LIZZIE E001  
EF COMMANDO 1366  
GVC MISS 004 772T

ACT BW	205 ADJ
86	769
Off Test WT	205 RATIO
1359	107
ADG	ADG RATIO
4.31	93
WDA	WDA RATIO
3.79	88
REA ADJ	FAT
12.6	0.37
IMF	ADJ YW
4.22	1380
IMF ADJ	SCROTAL
0	39

CED	BW	WW	YW	CW	MARB	BF	REA
2	2.7	81	139	52	0.42	0.06	0.25
\$F	\$G	\$B	\$M	\$EN	\$C	\$W	
85	34	118	68	-30	221	71	

Major hails from the result of a cow purchase from the great Green Valley Cattle dispersion. His calving ease sire RL Justice is owned by Stevenson Angus in Montana. Major ranks in the top 15% for WW and top 20% for YW. He would be considered an outcross bull with a flexible pedigree, while giving you a balanced EPD profile.

**120**

### CFS MAGNUM S447

Birth Date: 2/23/2024 Bull 21056639 Tattoo: S447

Schaefer Angus • Craig Schaefer

*Sire* SAV MAGNUM 1335  
MEAD MAGNITUDE  
SAV EMBLYNETTE 9023

ANGUSGS  
Powered by MyAngusGenetics

*Dam* CFS ROYAL LADY S177  
SAV INTERNATIONAL 2020  
ONEILLS ROYAL LADY 71

ACT BW	205 ADJ
85	741
Off Test WT	205 RATIO
1459	103
ADG	ADG RATIO
5.88	127
WDA	WDA RATIO
3.94	92
REA ADJ	FAT
15	0.37
IMF	ADJ YW
4.91	1440
IMF ADJ	SCROTAL
0.74	39.5

CED	BW	WW	YW	CW	MARB	BF	REA
2	3.8	73	131	53	0.38	0.001	0.69
\$F	\$G	\$B	\$M	\$EN	\$C	\$W	
101	41	142	59	-28	243	62	

Magnum is a well balanced, curve bending, calving ease sire. Progeny are thick and fast performing with maternal value. Dam has a nursing ratio of 111 on six calves, combining an IMF ratio of 109.



# Thank You!

The Iowa Cattlemen's Association thanks Boehringer Ingelheim for their continued support and dedication to the ICA Bull Evaluation Program.

We appreciate their partnership and support of the Iowa cattle industry.

- Iowa Cattlemen's Association



**Boehringer  
Ingelheim**

Proud supporter of the Bull Evaluation Program

# SYMBOL OF EXCELLENCE

## Yearling Angus Bulls

**121**

### CFS CERTIFIED S448

Birth Date: 2/26/2024 Bull 21056642 Tattoo: S448

Schaefer Angus • Craig Schaefer

*Sire* SAV CERTIFIED 0849  
MARCYS SCALE CRUSHER  
SAV BLACKCAP MAY 1420

ANGUS GS  
Powered by Waggoner Genetics

*Dam* CFS EMBLYNETTE S226  
SAV QUARTERBACK 7933  
SAV EMBLYNETTE 6042

ACT BW	205 ADJ
82	716
Off Test Wt	205 RATIO
1508	100
ADG	ADG RATIO
6.09	131
WDA	WDA RATIO
4.11	79
REA ADJ	FAT
16	0.48
IMF	ADJ YW
3.66	1500
IMF ADJ	SCROTAL
-0.6	40

CED	BW	WW	YW	CW	MARB	BF	REA
0	3.7	75	137	70	0.09	-0.013	1.06
\$F	\$G	\$B	\$M	\$EN	\$C	\$W	
121	33	154	62	-24	262	50	

Certified calf with size, length, muscle, superb structure, and solid feet with maternal value. Dam is a front pasture kind feminine, angular with a classic look. Adding carcass merit having four calves combining ratios for IMF and RE of 104.

**122**

### CFS EARLY ARRIVAL S401

Birth Date: 2/19/2024 Bull 21060334 Tattoo: S401

Schaefer Angus • Craig Schaefer

*Sire* SAV EARLY ARRIVAL 0903  
LD CAPITALIST 316  
SAV BLACKCAP MAY 3525

ANGUS GS  
Powered by Waggoner Genetics

*Dam* CFS PRIDE S202  
SAV AMERICAN FLAG 0233  
CFS PRIDE S217

ACT BW	205 ADJ
75	770
Off Test Wt	205 RATIO
1327	108
ADG	ADG RATIO
4.54	98
WDA	WDA RATIO
3.55	80
REA ADJ	FAT
13	0.52
IMF	ADJ YW
3.71	1357
IMF ADJ	SCROTAL
-0.54	44.5

CED	BW	WW	YW	CW	MARB	BF	REA
5	2.5	77	130	43	0.34	.061	0.45
\$F	\$G	\$B	\$M	\$EN	\$C	\$W	
85	32	113	63	-31	210	64	

From a first calf heifer. An Early Arrival calving ease, heifer-friendly bull.

## Gelbvieh Yearling Bulls

**128**

### TEEE 293M43

Birth Date: 4/3/2024 Bull AMGV1604514 Tattoo: TEEE 293M43

Tripp E LLC • David Edge & Tannor Gould

*Sire* ALLEGIANCE 254J370  
ALAN 68G3  
MS CAROLINE 254F37

*Dam* MS FACTS N FIGURES 293H36  
OPTIMIZER 148A24  
MS PEGGY SUE 293C46 ET

ACT BW	205 ADJ
85	727
Off Test Wt	205 RATIO
1177	100
ADG	ADG RATIO
3.77	81
WDA	WDA RATIO
3.57	76
REA ADJ	FAT
13.9	0.3
IMF	ADJ YW
3.59	1313
IMF ADJ	SCROTAL
-0.67	38

CED	BW	WW	YW	CEM	MARB	CFAT	REA
15	-0.2	68	103	7	0.51	-0.01	0.6
YG	STAY	FPI					
-0.17	13	82.86					

Stout Allegiance son backed by an outstanding Optimizer cow. This guy ranks in the top 25% for CED. A bull that is sound, soft made that will put pounds on your calves. You won't want to be the contending bidder.

**129**

### TEEE 213M32

Birth Date: 3/2/2024 Bull AMGV1604516 Tattoo: TEEE 213M32

Tripp E LLC • David Edge & Tannor Gould

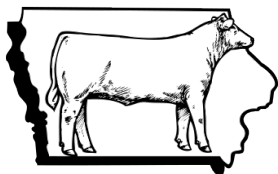
*Sire* ALLEGIANCE 254J370  
ALAN 68G3  
MS CAROLINE 254F37

*Dam* MS COCO 213H30  
SECRET SENSATION 140A43  
MS ENHANCER 213Z20

ACT BW	205 ADJ
76	692
Off Test Wt	205 RATIO
1236	95
ADG	ADG RATIO
3.75	81
WDA	WDA RATIO
3.41	73
REA ADJ	FAT
13.8	0.43
IMF	ADJ YW
4.84	1266
IMF ADJ	SCROTAL
0.67	38

CED	BW	WW	YW	CEM	MARB	BF	REA
14	-1.8	66	98	8	0.38	-0.01	0.41
YG	STAY	FPI					
-0.13	14	81.48					

An Allegiance son that also ranks in the top 25% for CED. A bull that will cover your cows with ease! A stout, deep bodied bull that can add power and pounds.



IOWA CATTLEMEN'S ASSOCIATION

**YOUR FUTURE  
IS OUR MISSION.**

*Renew Today!*

[www.iacattlemen.org](http://www.iacattlemen.org)

# Yearling Simmental Bulls

# SYMBOL OF EXCELLENCE

**132**

## WFSF MAKIN' CALLS 44M

Birth Date: 3/7/2024 Bull 4428403 Tattoo: 44M

Walter Family Stock Farm • Gary Walter

ACT BW	205 ADJ
80	862
Off Test WT	205 RATIO
1291	103
ADG	ADG RATIO
4.8	104
WDA	WDA RATIO
3.62	78
REA ADJ	FAT
14.2	0.41
IMF	ADJ YW
4.02	1318
IMF ADJ	SCROTAL
-0.21	36

*Sire* TJ LAST CALL 423H

CCR COWBOY CUT 5048Z

TJ 43Z

SimGenetics  
PROFIT THROUGH SCIENCE  
American Simmental Association

K C F BENNETT ABSOLUTE

*Dam* WFSF MISS ABSOLUTE 8E

WAL CARINA G49C

CED	BW	WW	YW	MCE	MARB	BF	REA
14.5	-0.05	77	119.1	8.2	0.46	0.004	0.47
YG	STAY	TI	API				
-0.04	13.7	83.7	138.9				

This will be the third consecutive year we have put a Last Call x 8E on the Symbol of Excellence Sale. If it's not broke, don't fix it! Last Call brings pounds at weaning and performance in the feedlot. Tag 132's Absolute dam brings high value of longevity with feet and udder quality while being very low maintenance. Don't expect a fourth offering in next year's sale as 8E FINALLY gave us a heifer, and she's not leaving the farm!

**133**

## WFSF MAGIC MIKE 40M

Birth Date: 2/5/2024 Bull 4428399 Tattoo: 40M

Walter Family Stock Farm • Jeremy Walter

ACT BW	205 ADJ
78	776
Off Test WT	205 RATIO
1349	93
ADG	ADG RATIO
4.78	103
WDA	WDA RATIO
3.48	73
REA ADJ	FAT
12.3	0.39
IMF	ADJ YW
5.56	1334
IMF ADJ	SCROTAL
1.44	40

*Sire* IRON CREEK RANGELAND A36K

HOOK'S EAGLE 6E

KBHR MATRON OF HONOR F202

SimGenetics  
PROFIT THROUGH SCIENCE  
American Simmental Association

TJ LAST CALL 423H

*Dam* WFSF KARMA 220K

WAL CAMILLE G53C

CED	BW	WW	YW	MCE	MARB	BF	REA
14.3	-0.8	74.5	112.9	7.9	0.52	-0.025	0.71
YG	STAY	TI	API				
24.5	16.3	84.5	147.2				

Iron Creek Rangeland A36K has been our Purebred Simmental calving ease go-to sire. With Eagle and Matron of Honor in his pedigree he brings a lot to the table. All of these half sibling sons will add pounds with quick performance as well as high maternal value to make long lasting highly productive cows. We feel confident their birthweights and EPDs match accordingly and would promote these bulls as heifer safe. We feel these half brothers offer their own unique pieces so please reach out with any questions, we love talkin' cattle!

**134**

## WFSF MOON DOG 42M

Birth Date: 2/23/2024 Bull 4428401 Tattoo: 42M

Walter Family Stock Farm • Jeremy Walter

ACT BW	205 ADJ
70	814
Off Test WT	205 RATIO
1198	97
ADG	ADG RATIO
4.75	102
WDA	WDA RATIO
3.24	81
REA ADJ	FAT
13.3	0.36
IMF	ADJ YW
5.2	1243
IMF ADJ	SCROTAL
1.06	36

*Sire* IRON CREEK RANGELAND A36K

HOOK'S EAGLE 6E

KBHR MATRON OF HONOR F202

SimGenetics  
PROFIT THROUGH SCIENCE  
American Simmental Association

TJ CHIEF 460G

*Dam* WFSF MISS 56K

WFSF MISS RESOURCE 9H

CED	BW	WW	YW	MCE	MARB	BF	REA
14.6	-2.2	72.8	109	7.3	0.57	-0.01	0.66
YG	STAY	TI	API				
-0.16	15	86.3	148.8				

Iron Creek Rangeland A36K has been our Purebred Simmental calving ease go-to sire. With Eagle and Matron of Honor in his pedigree he brings a lot to the table. All of these half sibling sons will add pounds with quick performance as well as high maternal value to make long lasting highly productive cows. We feel confident their birthweights and EPDs match accordingly and would promote these bulls as heifer safe. We feel these half brothers offer their own unique pieces so please reach out with any questions, we love talkin' cattle!

# Yearling Simmental Bulls

# SYMBOL OF EXCELLENCE

**135**

## WFSF MEAT LOAF 41M

Birth Date: 2/15/2024 Bull 4428400 Tattoo: 41M

Walter Family Stock Farm • Jeremy Walter

*Sure* IRON CREEK RANGELAND A36K  
 HOOK`S EAGLE 6E  
 KBHR MATRON OF HONOR F202  
 \*\*\*SimGenetics  
 PROFIT THROUGH SCIENCE  
 American Simmental Association  
*Dam* WFSF MISS 54K  
 TJ LAST CALL 423H  
 GCC THOMASINA 618D

ACT BW	205 ADJ
78	823
Off Test Wt	205 RATIO
1374	99
ADG	ADG RATIO
4.76	103
WDA	WDA RATIO
3.63	79
REA ADJ	FAT
14.4	0.52
IMF	ADJ YW
3.99	1389
IMF ADJ	SCROTAL
-0.24	39

CED	BW	WW	YW	MCE	MARB	BF	REA
15.4	-1	77.3	117.4	7	0.57	-0.008	0.72
YG	STAY	TI	API				
-0.16	17.6	87.8	155.2				

Iron Creek Rangeland A36K has been our Purebred Simmental calving ease go-to sire. With Eagle and Matron of Honor in his pedigree he brings a lot to the table. All of these half sibling sons will add pounds with quick performance as well as high maternal value to make long lasting highly productive cows. We feel confident their birthweights and EPDs match accordingly and would promote these bulls as heifer safe. We feel these half brothers offer their own unique pieces so please reach out with any questions, we love talkin' cattle!

**136**

## WFSF MR. MISTER 43M

Birth Date: 3/7/2024 Bull 4428402 Tattoo: 43M

Walter Family Stock Farm • Jeremy Walter

*Sure* IRON CREEK RANGELAND A36K  
 HOOK`S EAGLE 6E  
 KBHR MATRON OF HONOR F202  
 \*\*\*SimGenetics  
 PROFIT THROUGH SCIENCE  
 American Simmental Association  
*Dam* TJ 221J  
 TJ TOTALITY 438F  
 TJ 26Z

ACT BW	205 ADJ
76	900
Off Test Wt	205 RATIO
1259	108
ADG	ADG RATIO
4.71	102
WDA	WDA RATIO
3.53	77
REA ADJ	FAT
12.7	0.28
IMF	ADJ YW
3.9	1326
IMF ADJ	SCROTAL
-0.34	37

CED	BW	WW	YW	MCE	MARB	BF	REA
15.1	-0.9	81.1	124.4	8.1	0.53	-0.037	0.97
YG	STAY	TI	API				
-0.34	19.1	94.5	169.9				

Iron Creek Rangeland A36K has been our Purebred Simmental calving ease go-to sire. With Eagle and Matron of Honor in his pedigree he brings a lot to the table. All of these half sibling sons will add pounds with quick performance as well as high maternal value to make long lasting highly productive cows. We feel confident their birthweights and EPDs match accordingly and would promote these bulls as heifer safe. We feel these half brothers offer their own unique pieces so please reach out with any questions, we love talkin' cattle!

**137**

## WS 131YM

Birth Date: 2/16/2024 Bull 4408447 Tattoo: 131YM

Wolfe Simmentals • Bill & Jane Wolfe

*Sure* MR SR HIGHLIFE G1609  
 KBHR HIGH ROAD E283  
 MISS SR D1609  
 \*\*\*SimGenetics  
 PROFIT THROUGH SCIENCE  
 American Simmental Association  
*Dam* WS 131LY  
 TRIPLE C BETTIS S72J  
 WS G131L

ACT BW	205 ADJ
83	631
Off Test Wt	205 RATIO
1296	106
ADG	ADG RATIO
5.27	114
WDA	WDA RATIO
3.44	69
REA ADJ	FAT
14.6	0.15
IMF	ADJ YW
3.44	1277
IMF ADJ	SCROTAL
-0.83	40

CED	BW	WW	YW	MCE	MARB	BF	REA
16.2	-1.7	75.2	114.6	10.7	0.08	-0.11	0.75
YG	STAY	TI	API				
-0.47	22.6	81.1	153.4				

His dam has an average calving interval of 363 days and an average weaning weight ratio of 101 on 12 calves. Black blaze face tested homozygous black by GeneSeek.

**138**

## WS 44ZHM

Birth Date: 2/19/2024 Bull 4408408 Tattoo: 44ZHM

Wolfe Simmentals • Bill & Jane Wolfe

*Sure* MR SR HIGHLIFE G1609  
 KBHR HIGH ROAD E283  
 MISS SR D1609  
 \*\*\*SimGenetics  
 PROFIT THROUGH SCIENCE  
 American Simmental Association  
*Dam* WS 44KZH  
 WS 5UYE  
 WS CLARABELL II

ACT BW	205 ADJ
90	653
Off Test Wt	205 RATIO
1150	109
ADG	ADG RATIO
3.89	84
WDA	WDA RATIO
3.07	74
REA ADJ	FAT
13.7	0.07
IMF	ADJ YW
2.89	1144
IMF ADJ	SCROTAL
-1.43	36.5

CED	BW	WW	YW	MCE	MARB	BF	REA
12.2	0.9	84.5	125	7.2	-0.03	-0.108	0.99
YG	STAY	TI	API				
-0.51	17	80.2	129.7				

His dam has an average calving interval of 358 days and an average weaning weight ratio of 104 on three calves. Black blaze face tested homozygous black by GeneSeek.

# Yearling Simmental Bulls

# SYMBOL OF EXCELLENCE

**139**

## WS 2AGM

Birth Date: 3/10/2024 Bull 4408404 Tattoo: 2AGM

Wolfe Simmentals • Bill & Jane Wolfe

*Sire*

MR SR HIGHLIFE G1609

KBHR HIGH ROAD E283

MISS SR D1609

**SimGenetics**  
PROFIT THROUGH SCIENCE  
American Simmental Association

*Dam* WS 2SAG

WS MO-HAWK 44PYD

WS 2MP5A

ACT BW	205 ADJ
84	640
Off Test WT 205 RATIO	
1172	107
ADG	ADG RATIO
4.51	97
WDA	WDA RATIO
3.31	82
REA ADJ	FAT
12.2	0.15
IMF	ADJ YW
3.01	1206
IMF ADJ	SCROTAL
-1.3	38.5

CED	BW	WW	YW	MCE	MARB	BF	REA
15.8	-1.1	77.7	113.2	9.5	-0.17	-0.094	0.85
YG	STAY	TI	API				
-0.41	16.9	74.9	125.9				

His dam has an average calving interval of 369 days and an average weaning weight ratio of 106 on four calves. Black blaze face tested homozygous black by GeneSeek.

**140**

## BFSH BROKER M563

Birth Date: 02/06/2024 Bull 4455715 Tattoo: M563

Brandt Farms • Kirk Brandt

*Sire*

MR HOC BROKER

SVF STEEL FORCE S701

JM BF H25

**SimGenetics**  
PROFIT THROUGH SCIENCE  
American Simmental Association

*Dam* EXAR BLACKCAP 5686

EXAR TURNING POINT 3510B

EXAR BLACKCAP 1703

ACT BW	205 ADJ
88	692
Off Test WT 205 RATIO	
1421	
ADG	ADG RATIO
5.26	113
WDA	WDA RATIO
3.67	83
REA ADJ	FAT
13.2	0.4
IMF	ADJ YW
4.23	1345
IMF ADJ	SCROTAL
0.01	40

CED	BW	WW	YW	MCE	MARB	BF	REA
7.6	2.7	74.1	114.6	3	0.17	-0.025	0.51
YG	STAY	TI	API				
-0.13	10.8	69.4	101.4				

A tried and true pedigree here with performance, eye appeal and functionality to burn! If you keep heifers back or sell bred females then this bull needs to be at the top of your list on sale day!

**141**

## BFSH EXECUTIVE ACTION M792

Birth Date: 02/02/2024 Bull 4455704 Tattoo: M792

Brandt Farms • Kirk Brandt

*Sire*

W/C EXECUTIVE ORDER 8543B

W/C UNITED 956Y

MISS WERNING KP 8543U

**SimGenetics**  
PROFIT THROUGH SCIENCE  
American Simmental Association

*Dam* BFSH MONICA 792E

GWS EBONY'S TRADEMARK 6N

WB MONICA 9208

ACT BW	205 ADJ
73	742
Off Test WT 205 RATIO	
1449	
ADG	ADG RATIO
5.17	112
WDA	WDA RATIO
3.71	82
REA ADJ	FAT
14.7	0.29
IMF	ADJ YW
5.5	1358
IMF ADJ	SCROTAL
1.38	34

CED	BW	WW	YW	MCE	MARB	BF	REA
12.7	-0.9	72.4	108.8	4.9	0.18	-0.045	0.71
YG	STAY	TI	API				
-0.29	11.7	74.7	116.5				

A calving ease bull here with a couple of old standbys in the Simmental breed on both sides of his pedigree. This low BW and high CE 5/8 bull has predictability bred in and will get it done on cows after he is done breeding heifers.

**142**

## DOUBLE UP 1B

Birth Date: 2/28/2024 Bull 4452735 Tattoo: 1BM

Leaders Angus • Stanley Leaders

*Sire*

WHF/JS/CCS DOUBLE UP G365

W/C DOUBLE DOWN 5014E

WHF SUMMER 365C

**SimGenetics**  
PROFIT THROUGH SCIENCE  
American Simmental Association

*Dam* LONG`S LOADED UP K672

W/C LOADED UP 1119Y

LONG`S CARMEN

ACT BW	205 ADJ
85	697
Off Test WT 205 RATIO	
1202	
ADG	ADG RATIO
4.04	87
WDA	WDA RATIO
3.29	74
REA ADJ	FAT
14.3	0.22
IMF	ADJ YW
2.89	1262
IMF ADJ	SCROTAL
-1.43	33

CED	BW	WW	YW	MCE	MARB	BF	REA
11.3	-0.8	76.6	102.6	5.5	-0.07	-0.073	1.14
YG	STAY	TI	API				
-0.46	12.9	75.1	115.2				

This sire really caught everyone's attention at the 2022 OKC Cattlemen's Congress Show. He is known for his extremely correct in his overall style and balance. We purchased his dam from Long Simmental in Creston. She was a featured lot out of the highly successful family of Carmen. This bull has good solid genetics that will work in any program. He is a purebred.

# Notes

---

---

---

---

---

---

---

---

# Your Future IS OUR MISSION

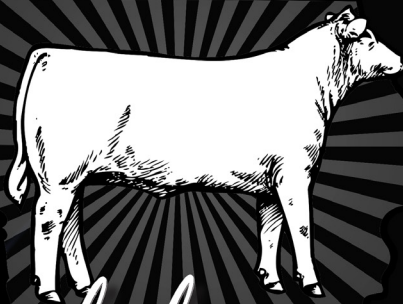


*Join Today*



[www.iacattlemen.org](http://www.iacattlemen.org)

★ ★ ★ ★ ★  
IOWA CATTLEMEN'S  
ASSOCIATION



*Symbol of*  
**EXCELLENCE**  
PERFORMANCE BULL SALE

**MONDAY, APRIL 7, 2025**  
WCC COW PALACE - ANITA, IOWA  
6:30 P.M.